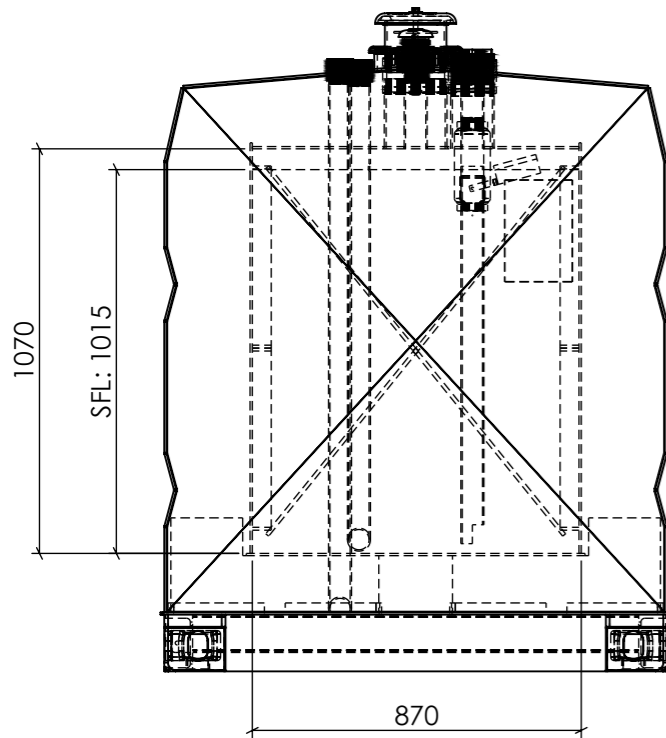
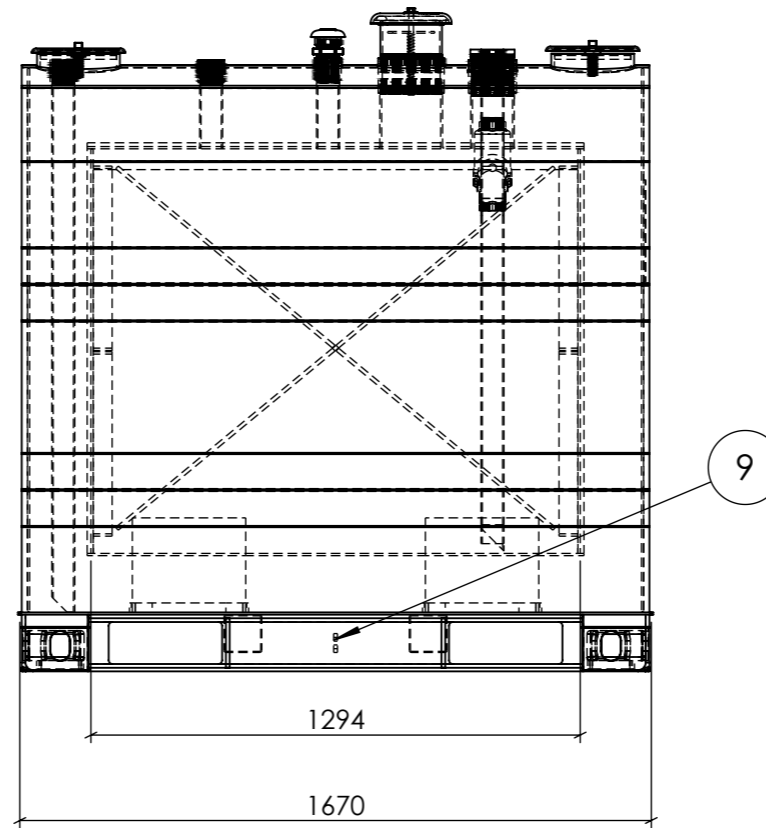


PLAN
SCALE 1 : 20

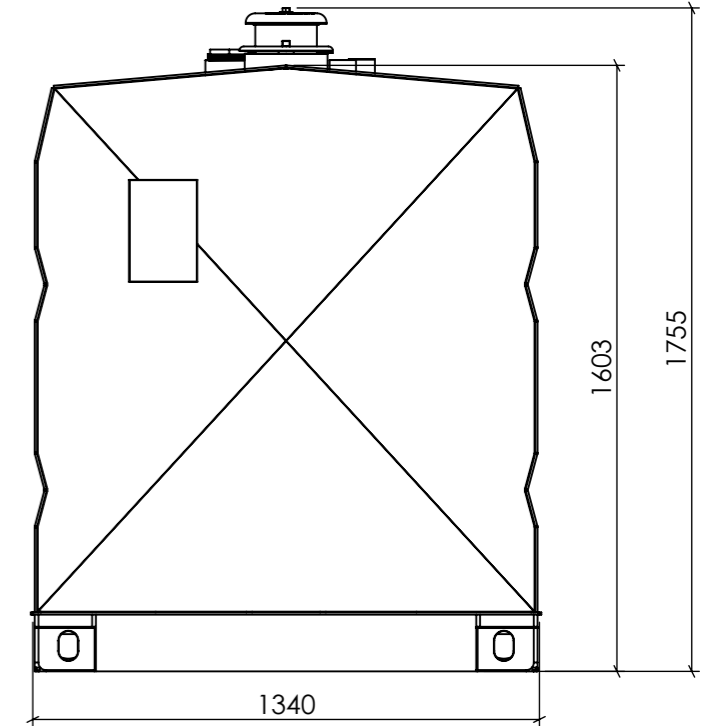
NO.	DESCRIPTION	QTY
1	Interstitial Vent	2
2	NB50 BSP Socket	2
4	NB100 BSP Fill	1
5	NB150 BSP E Vent	1
6	NB50 BSP Free To Air	1
7	NB50 BSP Interstitial Monitor	1
8	NB50 BSP Dip	1
9	Earth Lug	1



FRONT ELEVATION
SCALE 1 : 20



SIDE ELEVATION
SCALE 1 : 20



BACK ELEVATION
SCALE 1 : 20

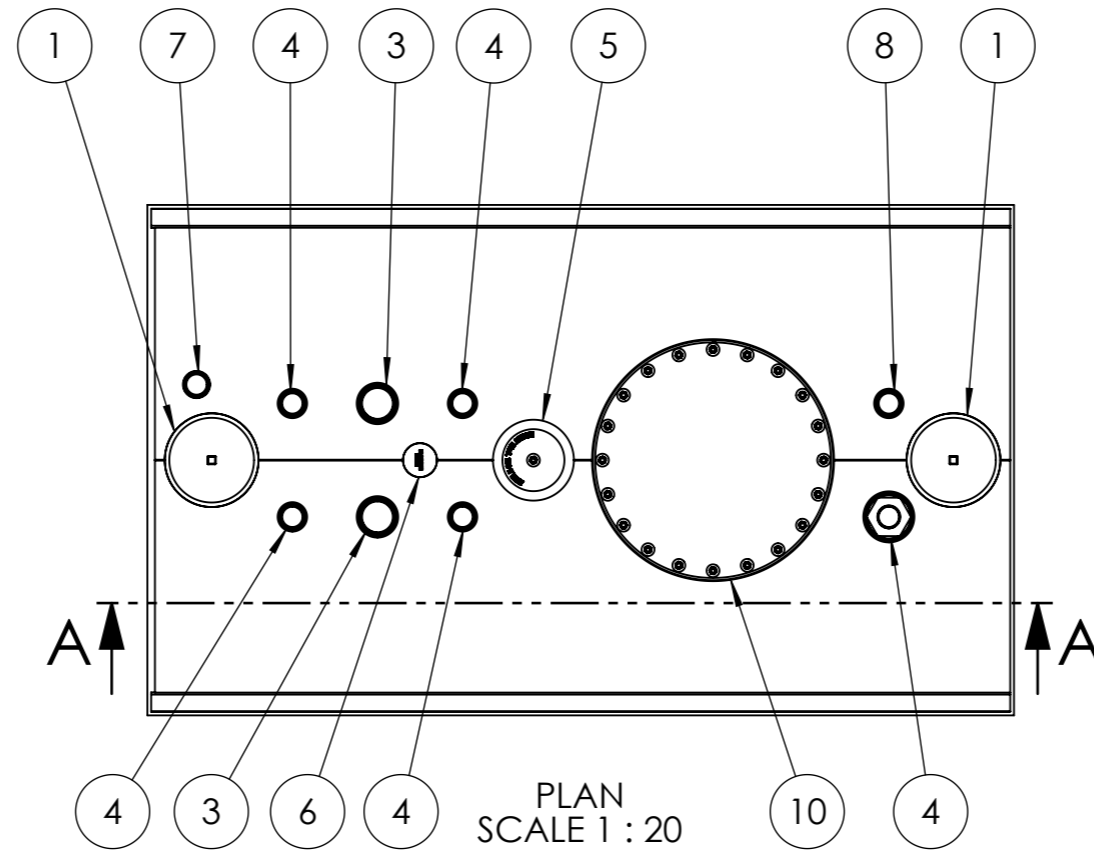
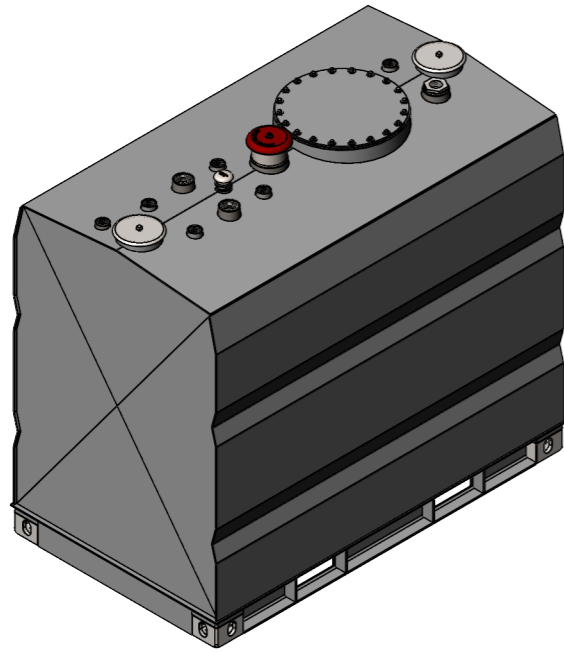
APPROXIMATE DRY WEIGHT: 2,453 kg

NOTE: This weight is only an estimate and can vary by up to 10% due to the make-up of the Vulcan insulation. This needs to be taken into consideration for transport arrangements and when designing for foundations.

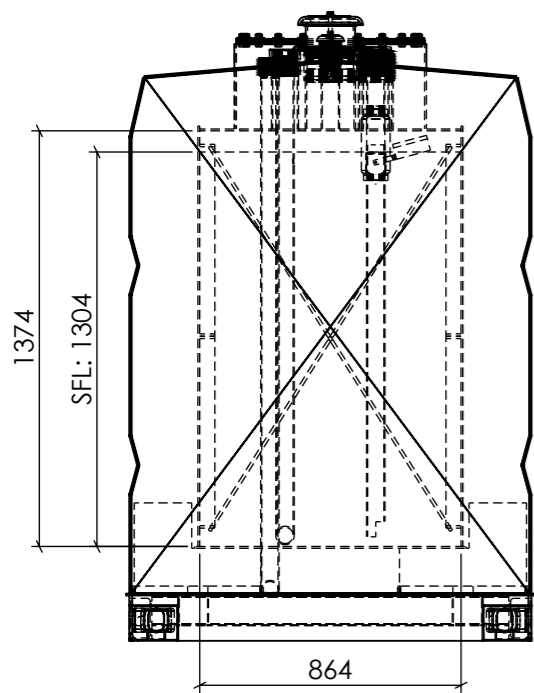


TANK DESIGNED TO SwRI 95-03, SwRI 93-01, AS1940, UL142

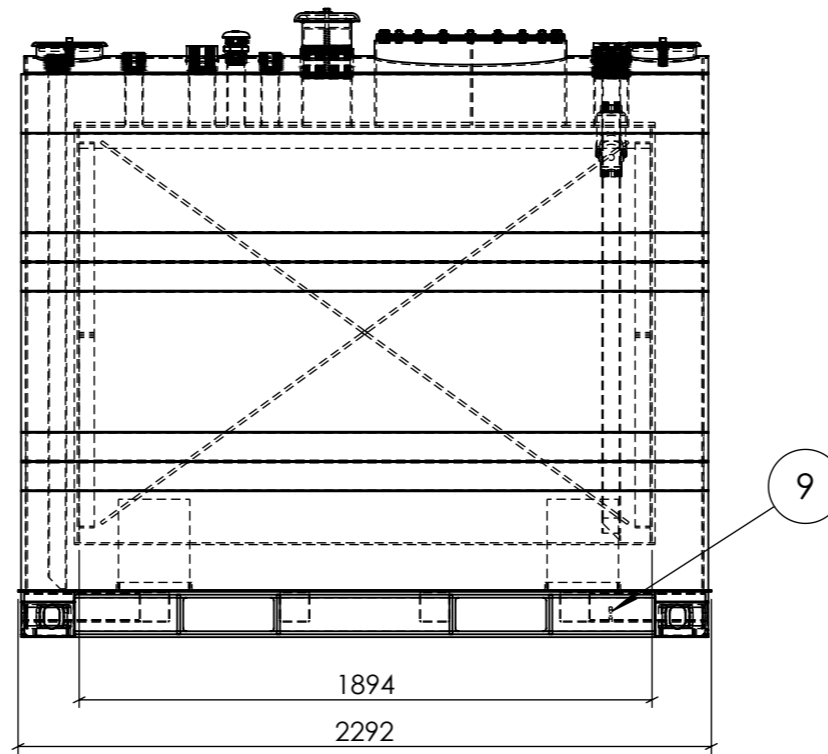
DEBURR AND BREAK SHARP EDGES		TITLE: FUEL STORAGE LIMITED VULCAN MULTI HAZARD TANK RANGE TANK SIZE 1,000L GENERAL ARRANGEMENT	
DATE: 4/11/2024		DWG NO. FSL VMH1000-0C-GA	
DRAWN BY: BAZ		A3	
REVISION: C		SCALE: 1:100	
DO NOT SCALE DRAWING		SHEET 1 OF 12	
WEIGHT:		THIS IS CONFIDENTIAL INFORMATION THIS DRAWING AND DESIGN IS THE SOLE PROPERTY OF FUEL STORAGE LIMITED. IT MUST NOT BE COPIED OR REPRODUCED IN ANY WAY WHATSOEVER AND/OR PASSED ON TO ANY THIRD PARTY WITHOUT WRITTEN AUTHORITY FROM FUEL STORAGE LIMITED.	



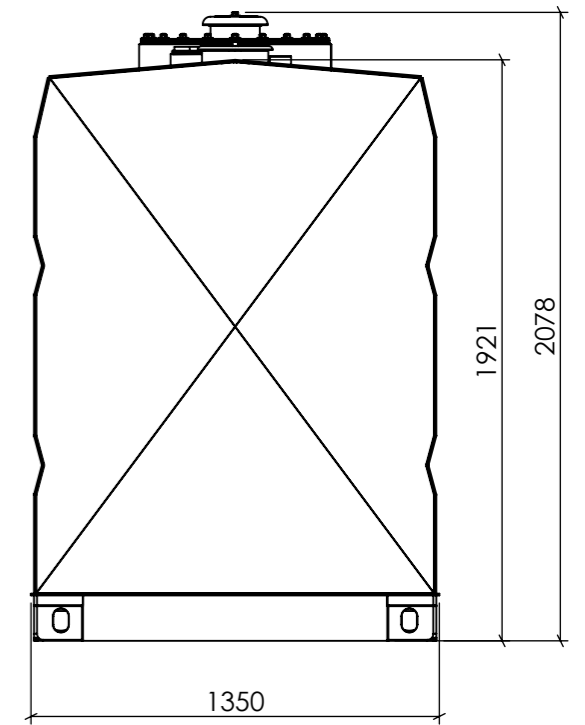
NO.	DESCRIPTION	QTY
1	Interstitial Vent	2
2	NB50 BSP Socket	4
3	NB80 BSP Socket	2
4	NB100 BSP Fill	1
5	NB150 BSP E Vent	1
6	NB50 BSP Free To Air	1
7	NB50 BSP Interstitial Monitor	1
8	NB50 BSP Dip	1
9	Earth Lug	1
10	Man Lid 20"	1



FRONT ELEVATION
SCALE 1 : 25



SIDE ELEVATION
SCALE 1 : 25



BACK ELEVATION
SCALE 1 : 25

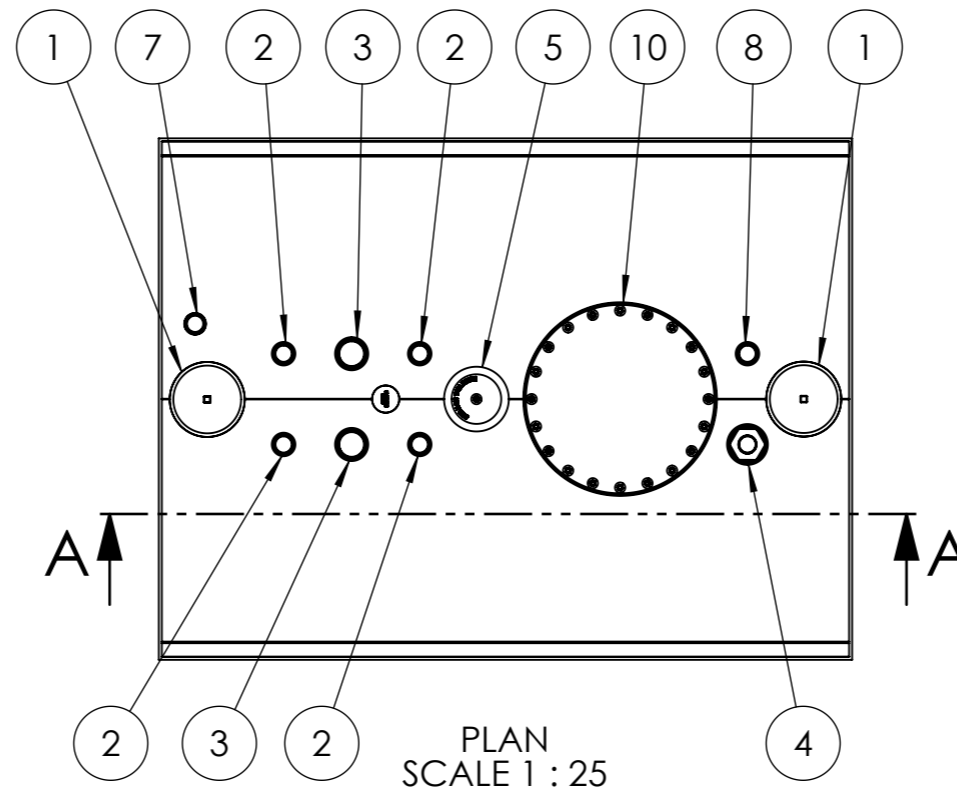
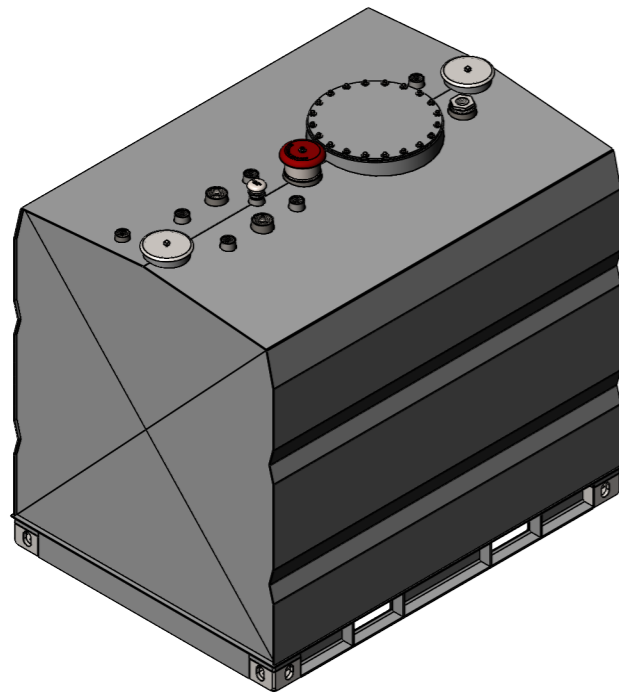
APPROXIMATE DRY WEIGHT: 3,737 kg

NOTE: This weight is only an estimate and can vary by up to 10% due to the make-up of the Vulcan insulation. This needs to be taken into consideration for transport arrangements and when designing for foundations.

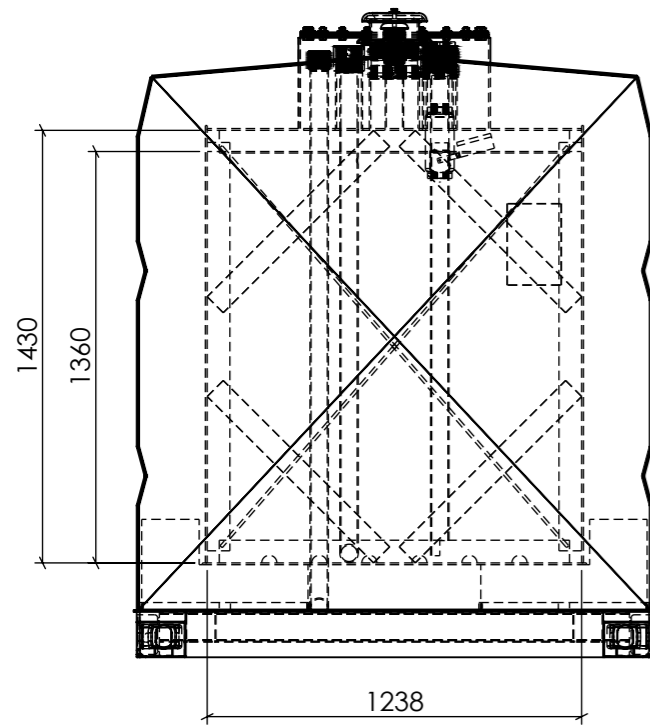


TANK DESIGNED TO SwRI 95-03, SwRI 93-01, AS1940, UL142

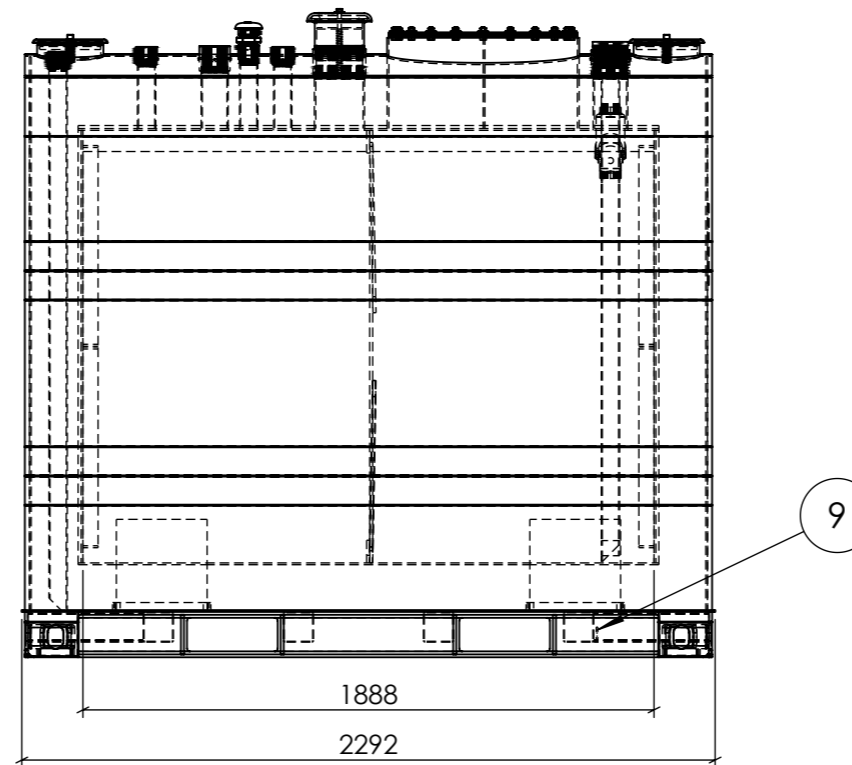
DEBURR AND BREAK SHARP EDGES		TITLE: FUEL STORAGE LIMITED VULCAN MULTI HAZARD TANK RANGE TANK SIZE 2,000L GENERAL ARRANGEMENT	
DATE: 4/11/2024		DWG NO. FSL VMH2000-0C-GA	
DRAWN BY: BAZ		A3	
REVISION: C		SCALE: 1:100	
DO NOT SCALE DRAWING		SHEET 2 OF 12	
WEIGHT:		THIS IS CONFIDENTIAL INFORMATION THIS DRAWING AND DESIGN IS THE SOLE PROPERTY OF FUEL STORAGE LIMITED. IT MUST NOT BE COPIED OR REPRODUCED IN ANY WAY WHATSOEVER AND/OR PASSED ON TO ANY THIRD PARTY WITHOUT WRITTEN AUTHORITY FROM FUEL STORAGE LIMITED.	



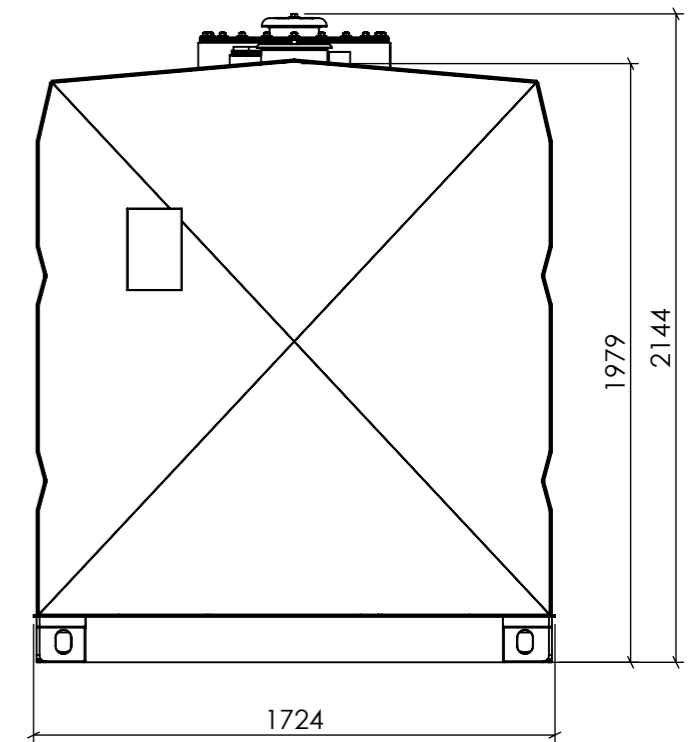
NO.	DESCRIPTION	QTY
1	Interstitial Vent	2
2	NB50 BSP Socket	4
3	NB80 BSP Socket	2
4	NB100 BSP Fill	1
5	NB150 BSP E Vent	1
6	NB50 BSP Free To Air	1
7	NB50 BSP Interstitial Monitor	1
8	NB50 BSP Dip	1
9	Earth Lug	1
10	Man Lid 20"	1



FRONT ELEVATION
SCALE 1 : 25



SIDE ELEVATION
SCALE 1 : 25



BACK ELEVATION
SCALE 1 : 25

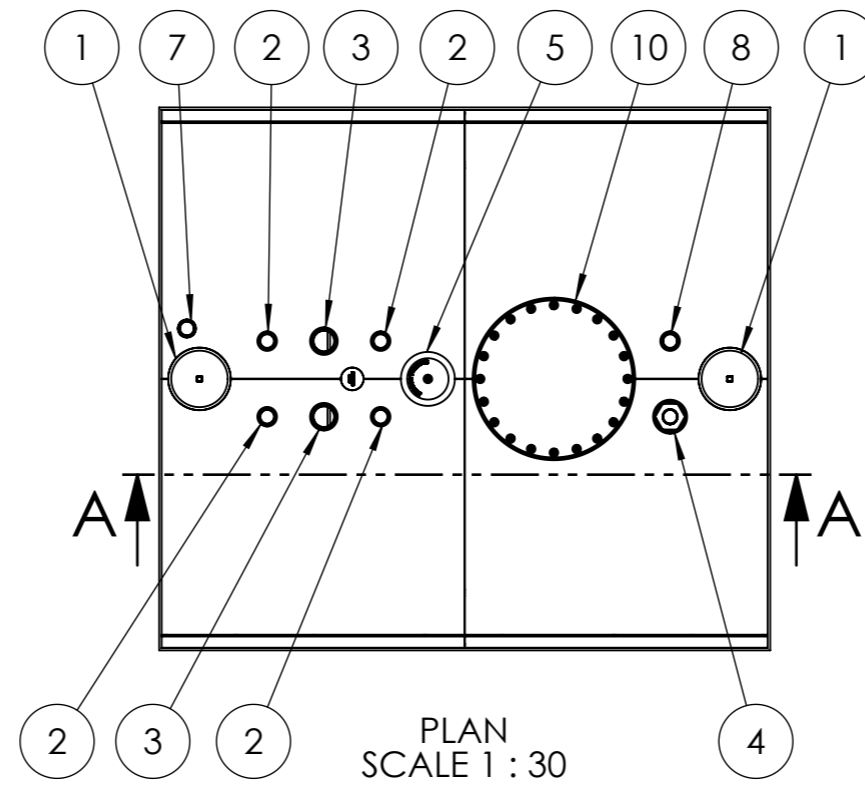
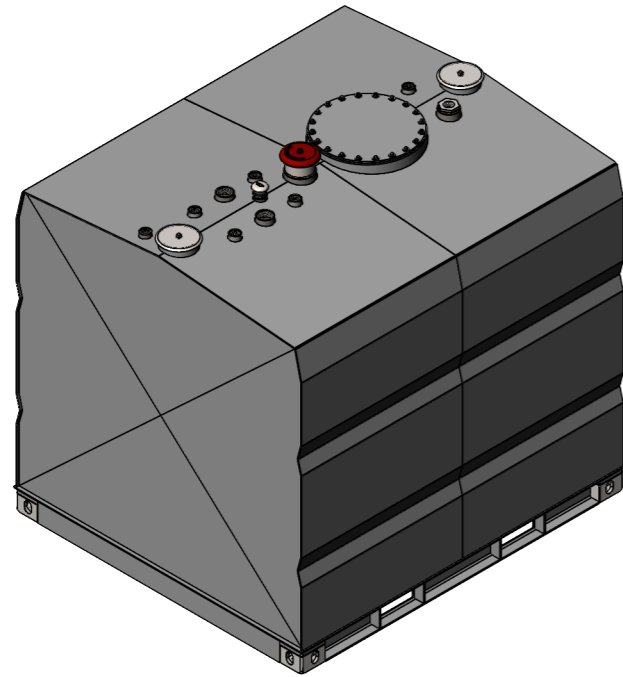
APPROXIMATE DRY WEIGHT: 4,512 kg

NOTE: This weight is only an estimate and can vary by up to 10% due to the make-up of the Vulcan insulation. This needs to be taken into consideration for transport arrangements and when designing for foundations.

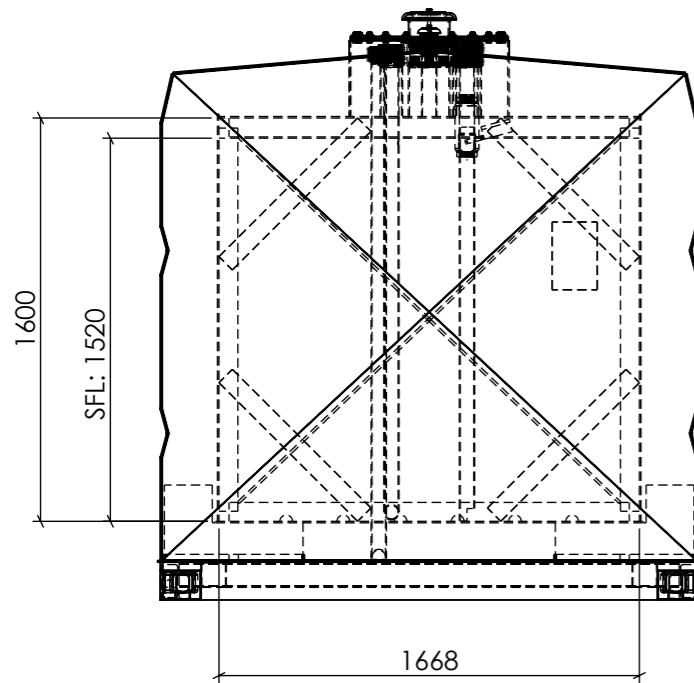


TANK DESIGNED TO SwRI 95-03, SwRI 93-01, AS1940, UL142

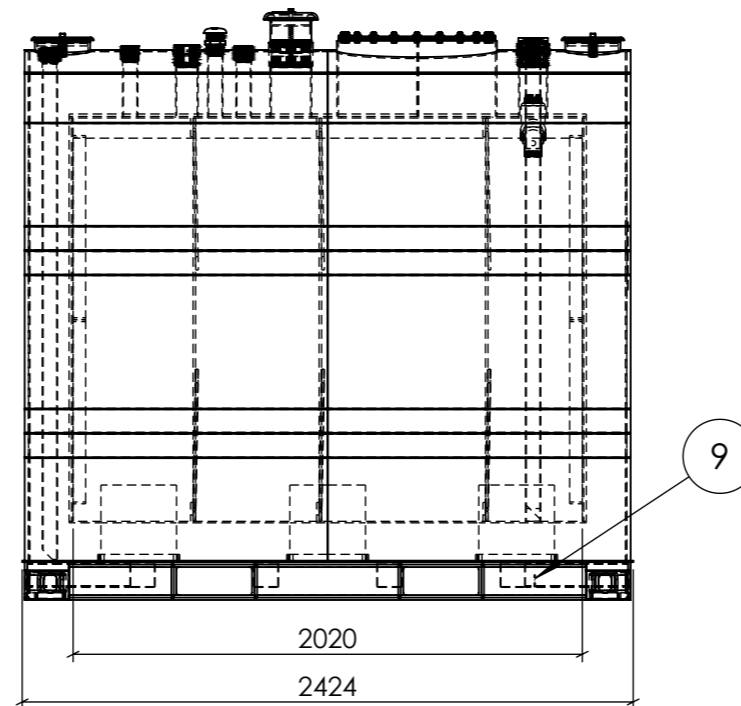
DEBURR AND BREAK SHARP EDGES		TITLE: FUEL STORAGE LIMITED VULCAN MULTI HAZARD TANK RANGE TANK SIZE 3,000L GENERAL ARRANGEMENT	
DATE: 4/11/2024		DWG NO. FSL VMH3000-0C-GA	
DRAWN BY: BAZ		A3	
REVISION: C		SCALE: 1:100	
DO NOT SCALE DRAWING		SHEET 3 OF 12	
WEIGHT:		THIS IS CONFIDENTIAL INFORMATION THIS DRAWING AND DESIGN IS THE SOLE PROPERTY OF FUEL STORAGE LIMITED. IT MUST NOT BE COPIED OR REPRODUCED IN ANY WAY WHATSOEVER AND/OR PASSED ON TO ANY THIRD PARTY WITHOUT WRITTEN AUTHORITY FROM FUEL STORAGE LIMITED.	



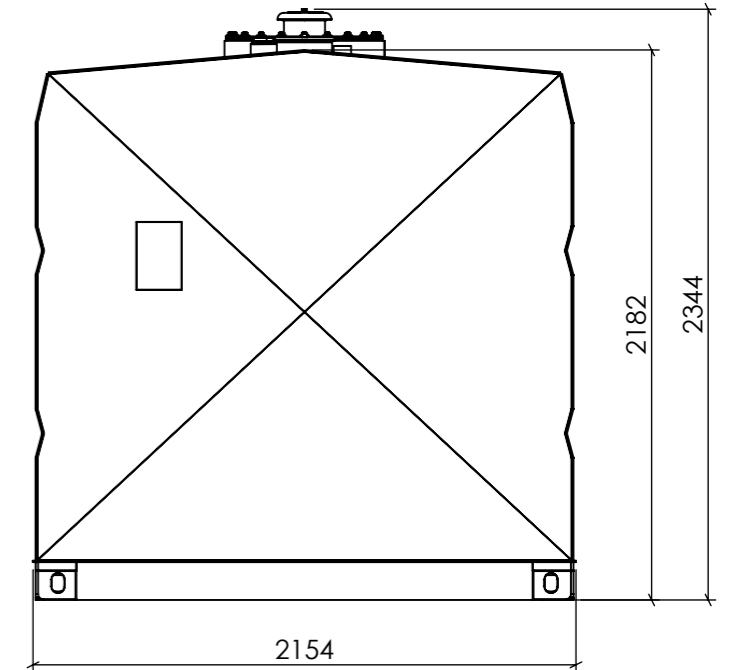
NO.	DESCRIPTION	QTY
1	Interstitial Vent	2
2	NB50 BSP Socket	4
3	NB80 BSP Socket	2
4	NB100 BSP Fill	1
5	NB150 BSP E Vent	1
6	NB50 BSP Free To Air	1
7	NB50 BSP Interstitial Monitor	1
8	NB50 BSP Dip	1
9	Earth Lug	1
10	Man Lid 20"	1



FRONT ELEVATION
SCALE 1 : 30



SIDE ELEVATION
SCALE 1 : 30



BACK ELEVATION
SCALE 1 : 30

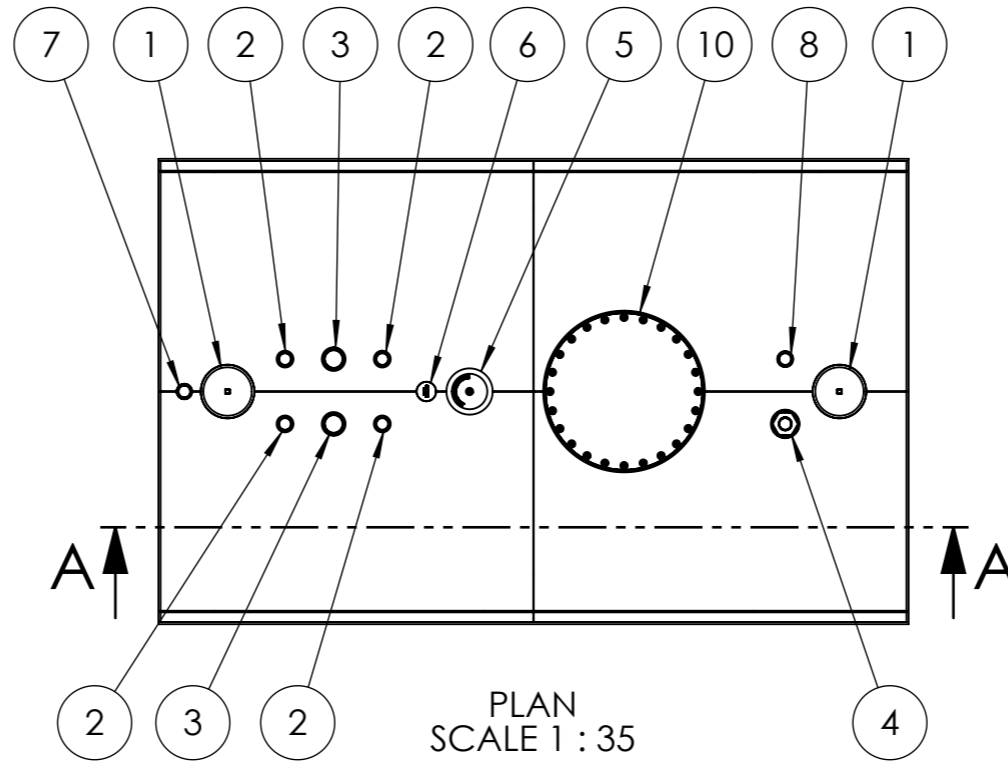
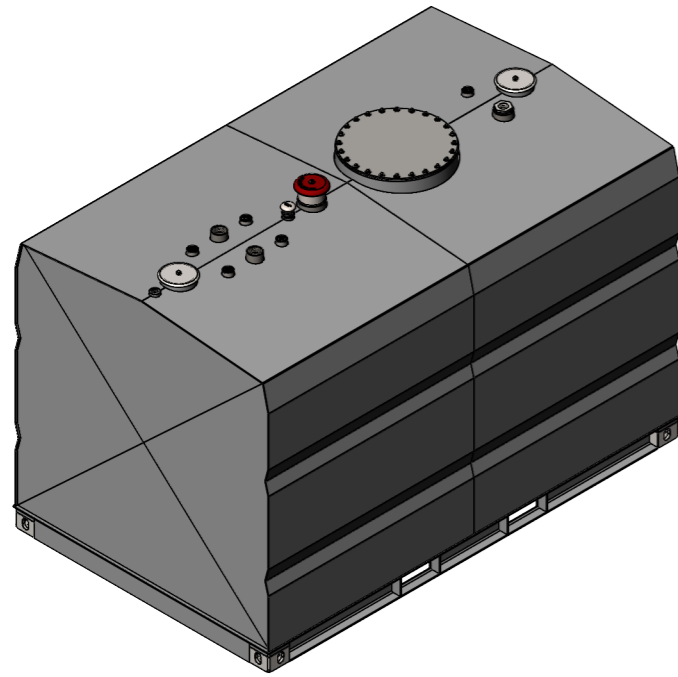
APPROXIMATE DRY WEIGHT: 6,064 kg

NOTE: This weight is only an estimate and can vary by up to 10% due to the make-up of the Vulcan insulation. This needs to be taken into consideration for transport arrangements and when designing for foundations.

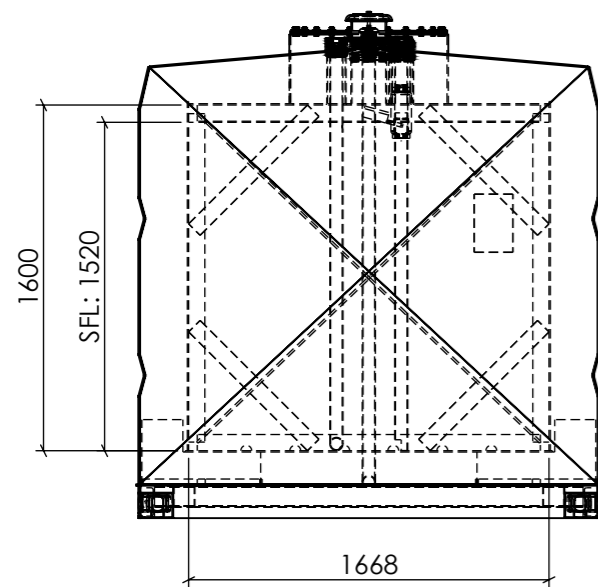


TANK DESIGNED TO SwRI 95-03, SwRI 93-01, AS1940, UL142

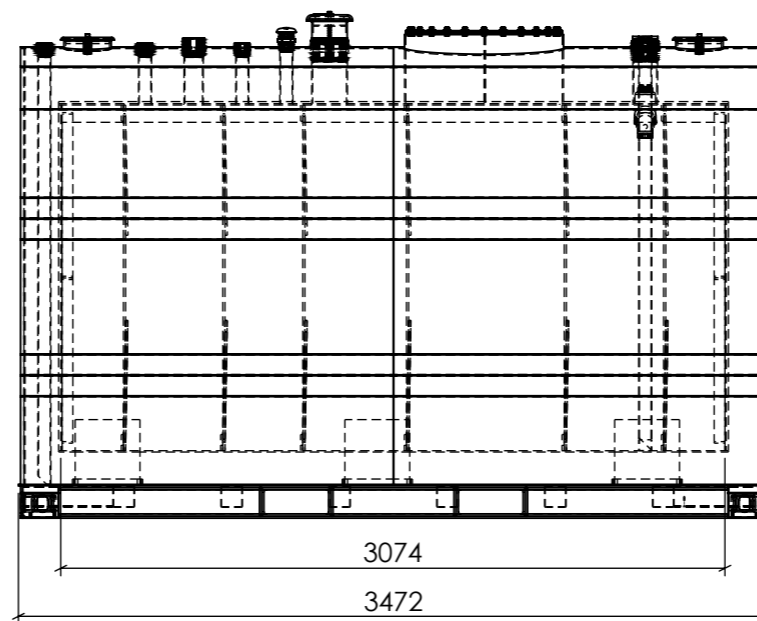
DEBURR AND BREAK SHARP EDGES		TITLE: FUEL STORAGE LIMITED VULCAN MULTI HAZARD TANK RANGE TANK SIZE 5,000L GENERAL ARRANGEMENT	
DATE: 4/11/2024		DWG NO. FSL VMH5000-0C-GA	
DRAWN BY: BAZ		A3	
REVISION: C		SCALE: 1:100	
DO NOT SCALE DRAWING		SHEET 4 OF 12	
WEIGHT:		THIS IS CONFIDENTIAL INFORMATION THIS DRAWING AND DESIGN IS THE SOLE PROPERTY OF FUEL STORAGE LIMITED. IT MUST NOT BE COPIED OR REPRODUCED IN ANY WAY WHATSOEVER AND/OR PASSED ON TO ANY THIRD PARTY WITHOUT WRITTEN AUTHORITY FROM FUEL STORAGE LIMITED.	



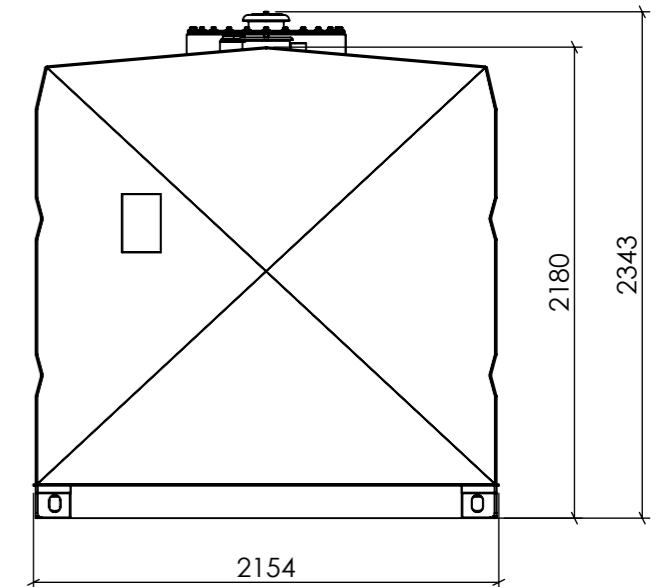
NO.	DESCRIPTION	QTY
1	Interstitial Vent	2
2	NB50 BSP Socket	4
3	NB80 BSP Socket	2
4	NB100 BSP Fill	1
5	NB150 BSP E Vent	1
6	NB50 BSP Free To Air	1
7	NB50 BSP Interstitial Monitor	1
8	NB50 BSP Dip	1
9	Earth Lug	1
10	Man Lid 24"	1



FRONT ELEVATION
SCALE 1 : 35



SIDE ELEVATION
SCALE 1 : 35



BACK ELEVATION
SCALE 1 : 35

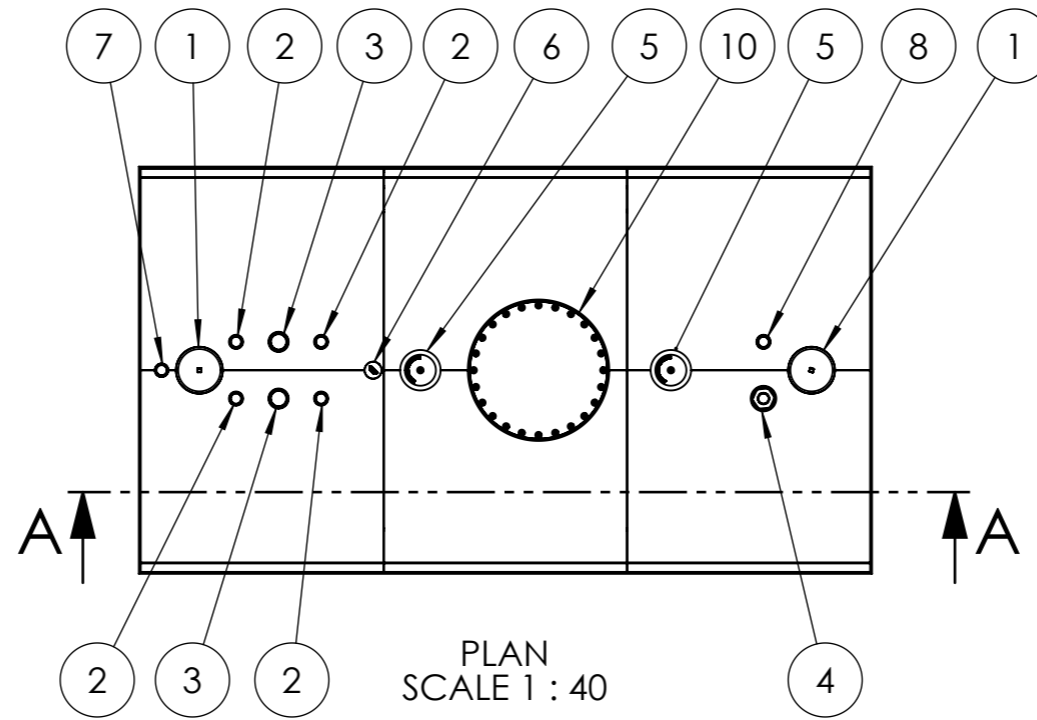
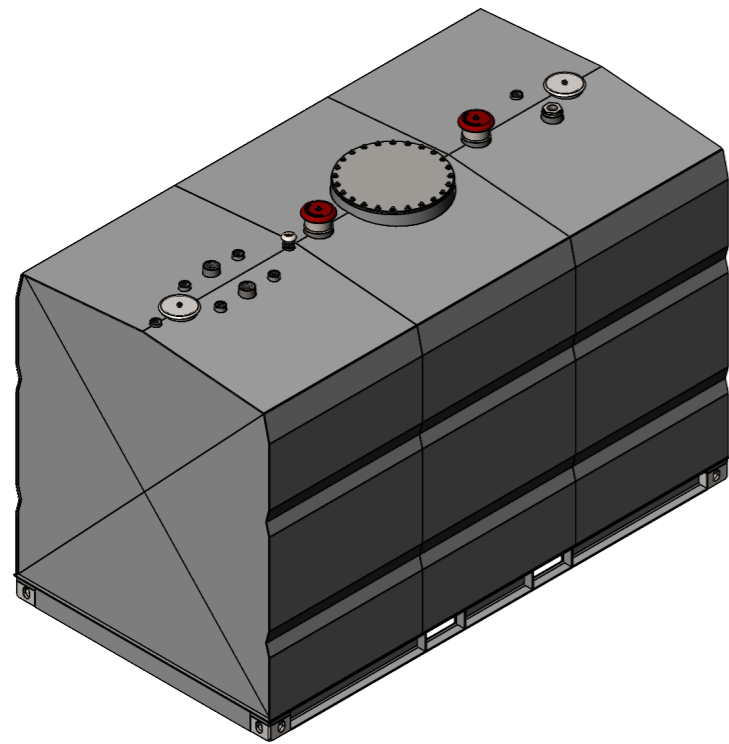
APPROXIMATE DRY WEIGHT: 8,138 kg

NOTE: This weight is only an estimate and can vary by up to 10% due to the make-up of the Vulcan insulation. This needs to be taken into consideration for transport arrangements and when designing for foundations.

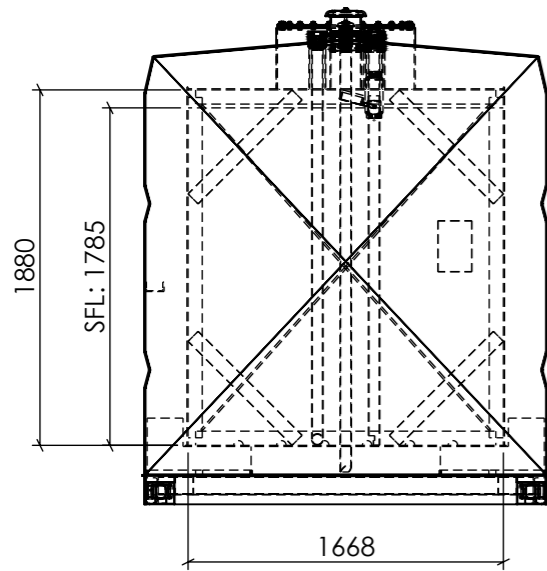


TANK DESIGNED TO SwRI 95-03, SwRI 93-01, AS1940, UL142

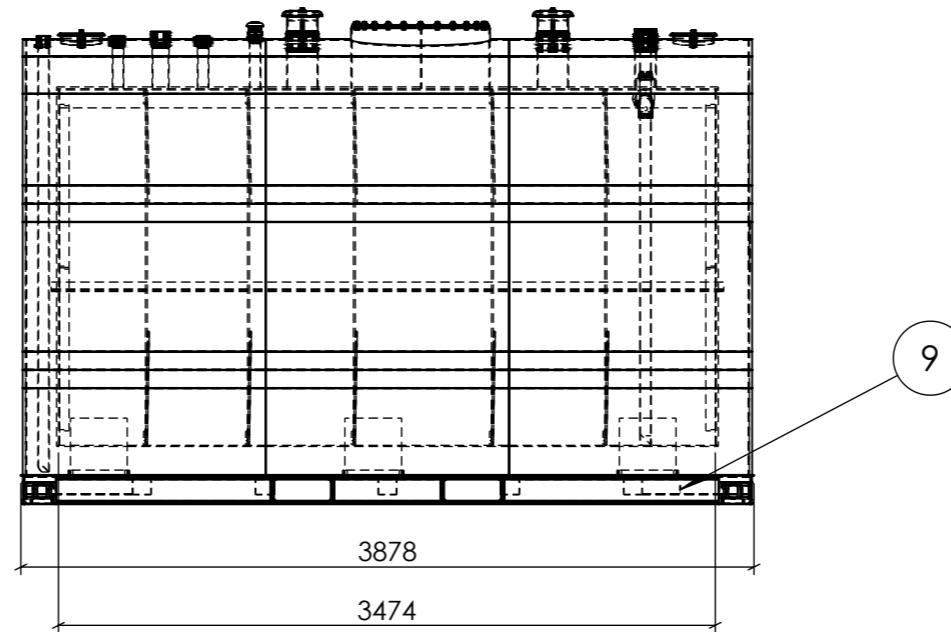
DEBURR AND BREAK SHARP EDGES		TITLE:	
DATE: 4/11/2024		FUEL STORAGE LIMITED	
DRAWN BY: BAZ		VULCAN MULTI HAZARD TANK RANGE	
REVISION: C		TANK SIZE 7,500L	
DO NOT SCALE DRAWING		GENERAL ARRANGEMENT	
		DWG NO.	A3
		FSL VMH7500-0C-GA	
WEIGHT:	SCALE: 1:100	SHEET 5 OF 12	
<small>THIS IS CONFIDENTIAL INFORMATION THIS DRAWING AND DESIGN IS THE SOLE PROPERTY OF FUEL STORAGE LIMITED. IT MUST NOT BE COPIED OR REPRODUCED IN ANY WAY WHATSOEVER AND/OR PASSED ON TO ANY THIRD PARTY WITHOUT WRITTEN AUTHORITY FROM FUEL STORAGE LIMITED.</small>			



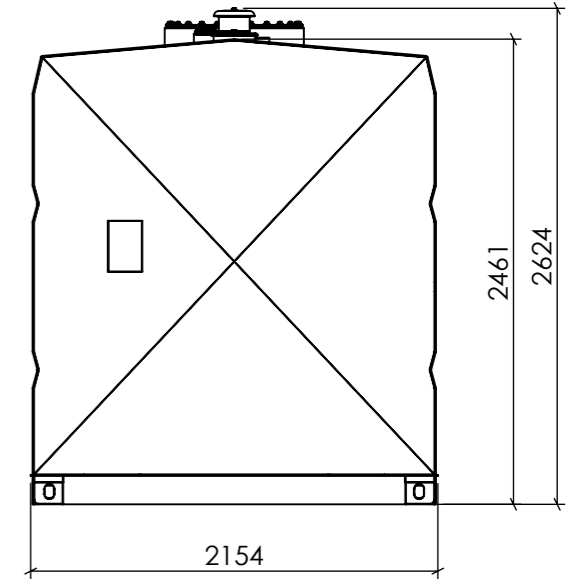
NO.	DESCRIPTION	QTY
1	Interstitial Vent	2
2	NB50 BSP Socket	4
3	NB80 BSP Socket	2
4	NB100 BSP Fill	1
5	NB150 BSP E Vent	2
6	NB50 BSP Free To Air	1
7	NB50 BSP Interstitial Monitor	1
8	NB50 BSP Dip	1
9	Earth Lug	1
10	Man Lid 24"	1



FRONT ELEVATION
SCALE 1 : 40



SIDE ELEVATION
SCALE 1 : 40



BACK ELEVATION
SCALE 1 : 40

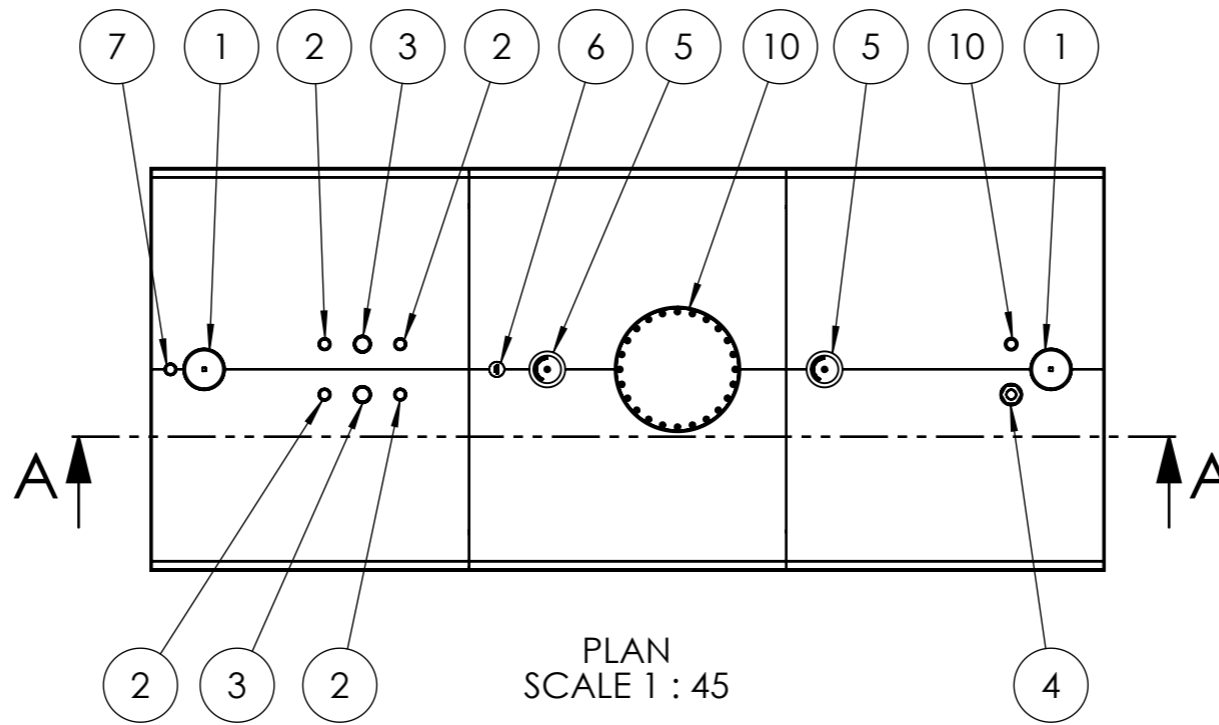
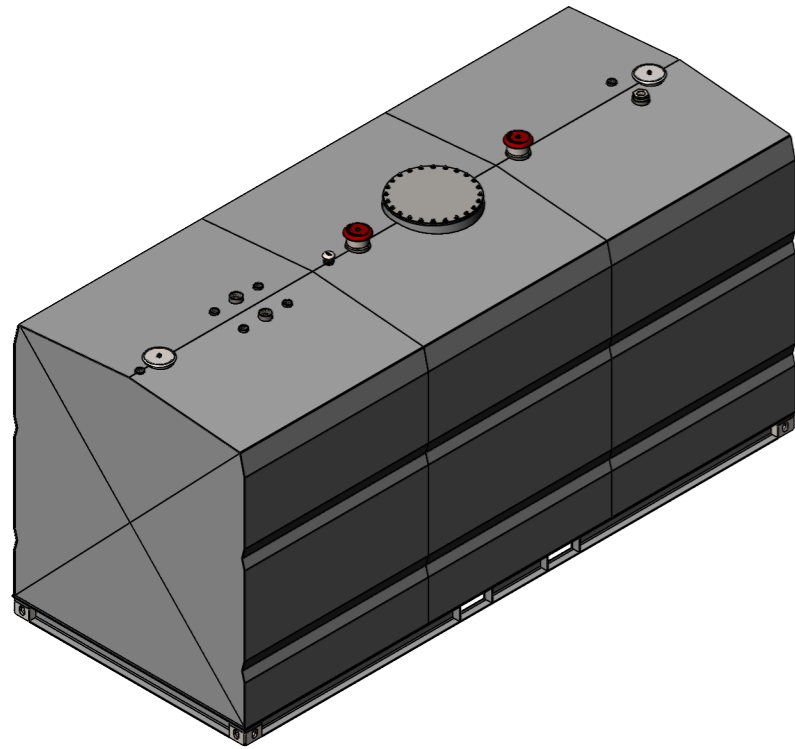
APPROXIMATE DRY WEIGHT: 11,328 kg

NOTE: This weight is only an estimate and can vary by up to 10% due to the make-up of the Vulcan insulation. This needs to be taken into consideration for transport arrangements and when designing for foundations.

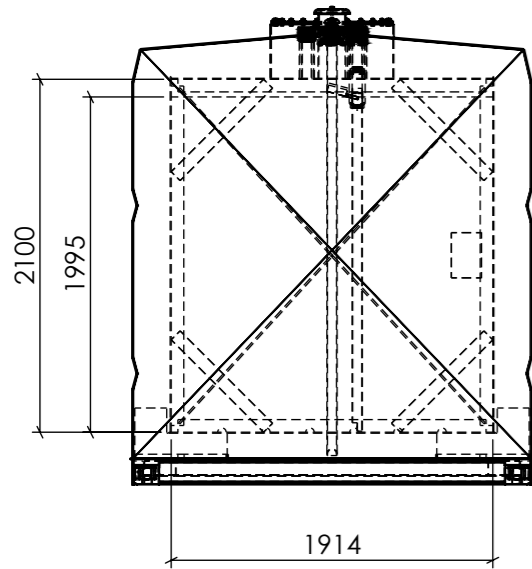


TANK DESIGNED TO SwRI 95-03, SwRI 93-01, AS1940, UL142

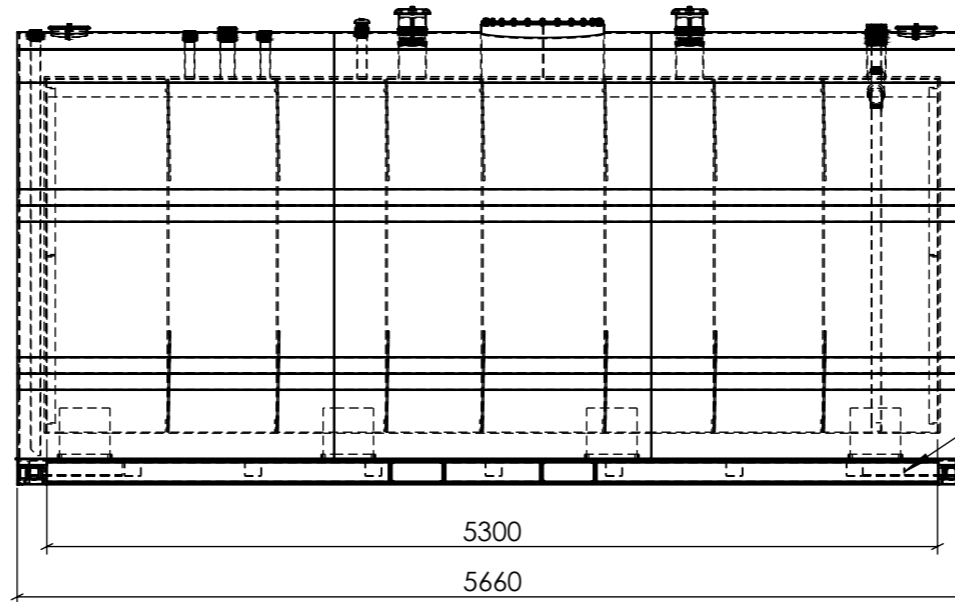
DEBURR AND BREAK SHARP EDGES		TITLE: FUEL STORAGE LIMITED VULCAN MULTI HAZARD TANK RANGE TANK SIZE 10,000L GENERAL ARRANGEMENT	
DATE: 4/11/2024		DWG NO. FSL VMH10000-0C-GA	
DRAWN BY: BAZ		A3	
REVISION: C		SCALE:1:100	
DO NOT SCALE DRAWING		SHEET 6 OF 12	
WEIGHT:		THIS IS CONFIDENTIAL INFORMATION THIS DRAWING AND DESIGN IS THE SOLE PROPERTY OF FUEL STORAGE LIMITED. IT MUST NOT BE COPIED OR REPRODUCED IN ANY WAY WHATSOEVER AND/OR PASSED ON TO ANY THIRD PARTY WITHOUT WRITTEN AUTHORITY FROM FUEL STORAGE LIMITED.	



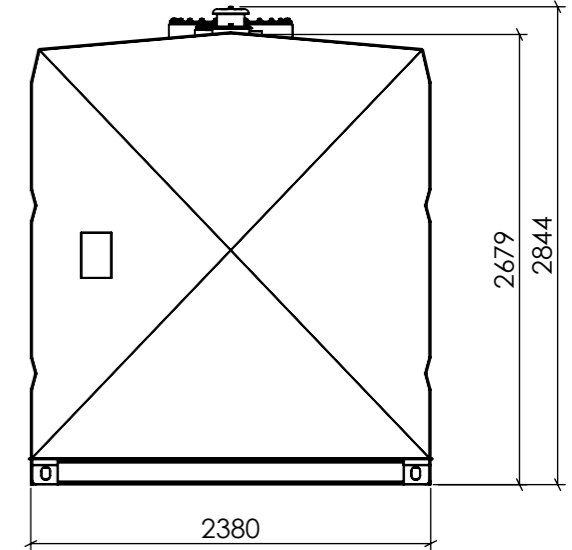
NO.	DESCRIPTION	QTY
1	Interstitial Vent	2
2	NB50 BSP Socket	4
3	NB80 BSP Socket	2
4	NB100 BSP Fill	1
5	NB150 BSP E Vent	2
6	NB50 BSP Free To Air	1
7	NB50 BSP Interstitial Monitor	1
8	NB50 BSP Dip	1
9	Earth Lug	1
10	Man Lid 24"	1



FRONT ELEVATION
SCALE 1 : 45



SIDE ELEVATION
SCALE 1 : 45



BACK ELEVATION
SCALE 1 : 45

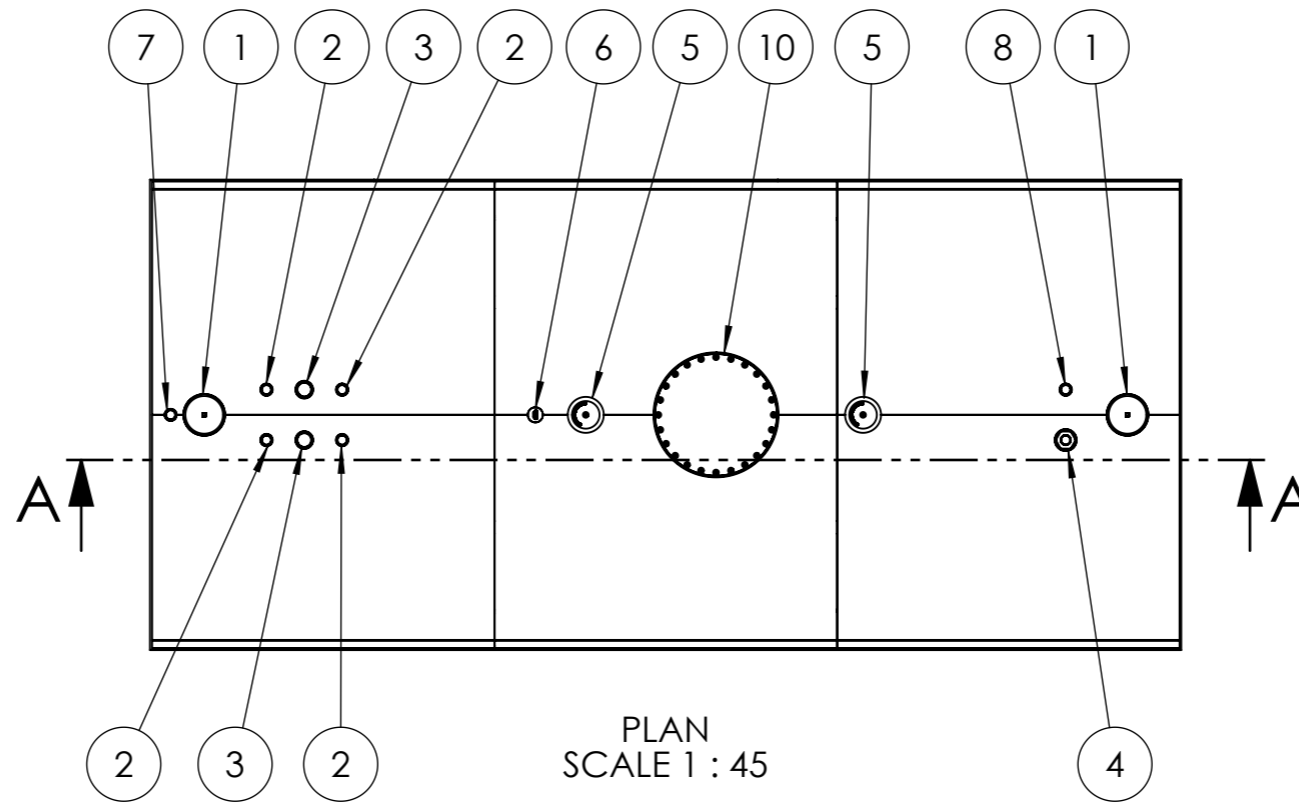
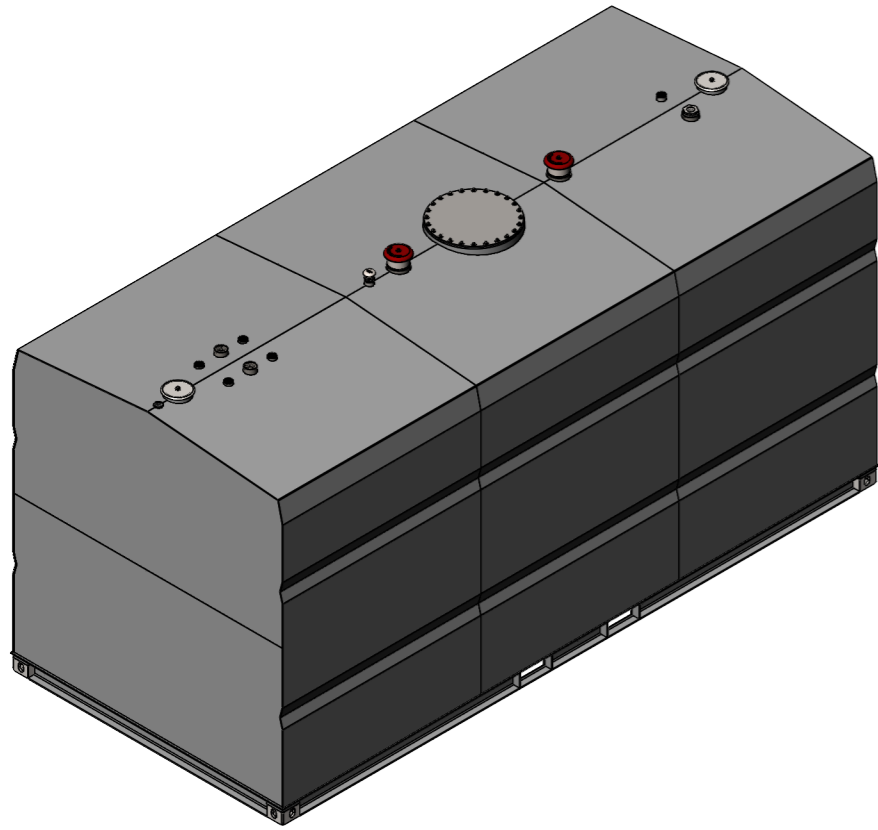
APPROXIMATE DRY WEIGHT: 15,503 kg

NOTE: This weight is only an estimate and can vary by up to 10% due to the make-up of the Vulcan insulation. This needs to be taken into consideration for transport arrangements and when designing for foundations.

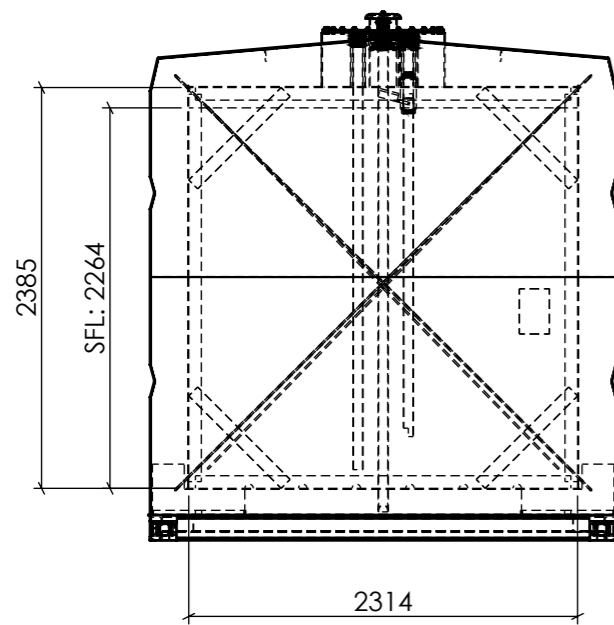
DEBURR AND BREAK SHARP EDGES		TITLE:	
DATE: 4/11/2024		FUEL STORAGE LIMITED	
DRAWN BY: BAZ		VULCAN MULTI HAZARD TANK RANGE	
REVISION: C		TANK SIZE 20,000L	
DO NOT SCALE DRAWING		GENERAL ARRANGEMENT	
		DWG NO.	A3
		FSL VMH20000-0C-GA	
WEIGHT:	SCALE: 1:100	SHEET 7 OF 12	
<small>THIS IS CONFIDENTIAL INFORMATION THIS DRAWING AND DESIGN IS THE SOLE PROPERTY OF FUEL STORAGE LIMITED. IT MUST NOT BE COPIED OR REPRODUCED IN ANY WAY WHATSOEVER AND/OR PASSED ON TO ANY THIRD PARTY WITHOUT WRITTEN AUTHORITY FROM FUEL STORAGE LIMITED.</small>			



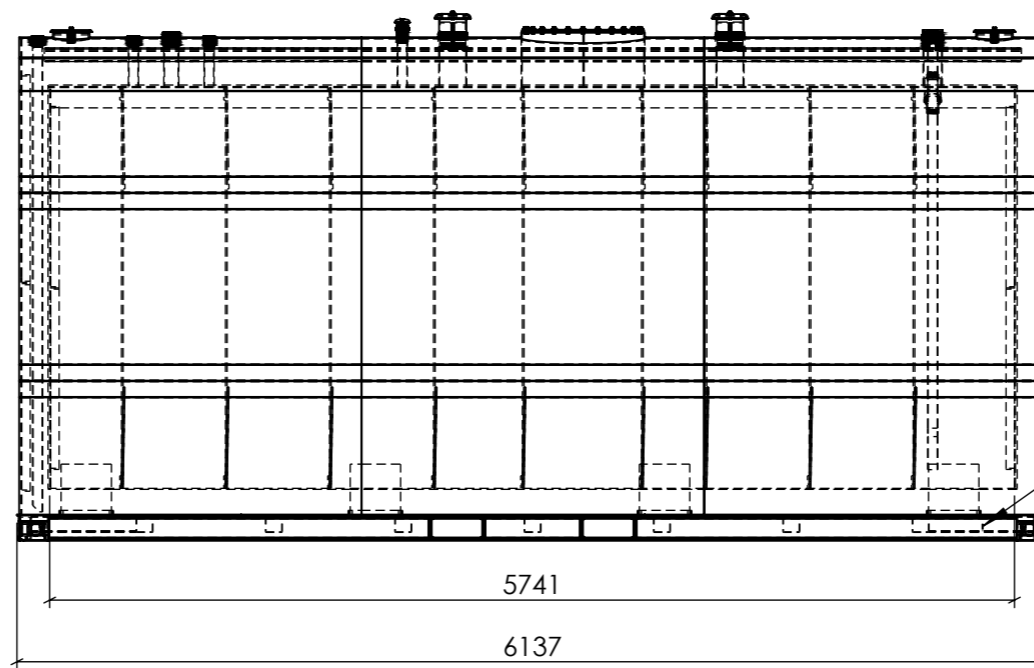
TANK DESIGNED TO SwRI 95-03, SwRI 93-01, AS1940, UL142



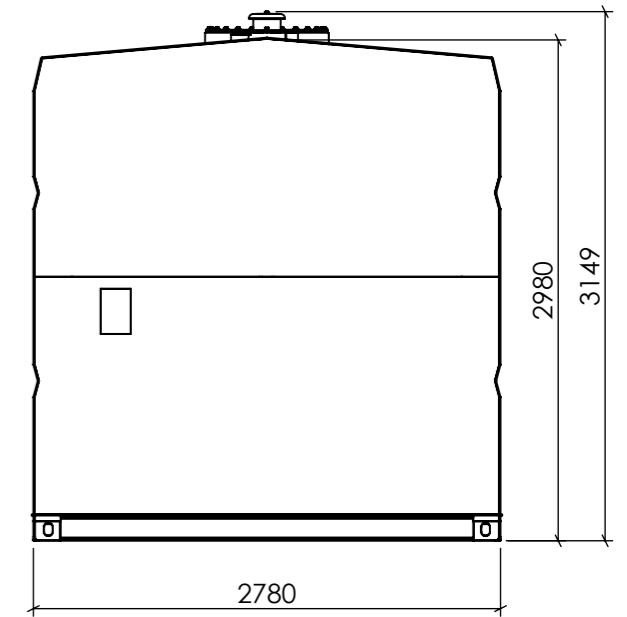
NO.	DESCRIPTION	QTY
1	Interstitial Vent	2
2	NB50 BSP Socket	4
3	NB80 BSP Socket	2
4	NB100 BSP Fill	1
5	NB150 BSP E Vent	2
6	NB50 BSP Free To Air	1
7	NB50 BSP Interstitial Monitor	1
8	NB50 BSP Dip	1
9	Earth Lug	1
10	Man Lid 24"	1



FRONT ELEVATION
SCALE 1 : 45



SIDE ELEVATION
SCALE 1 : 45



BACK ELEVATION
SCALE 1 : 45

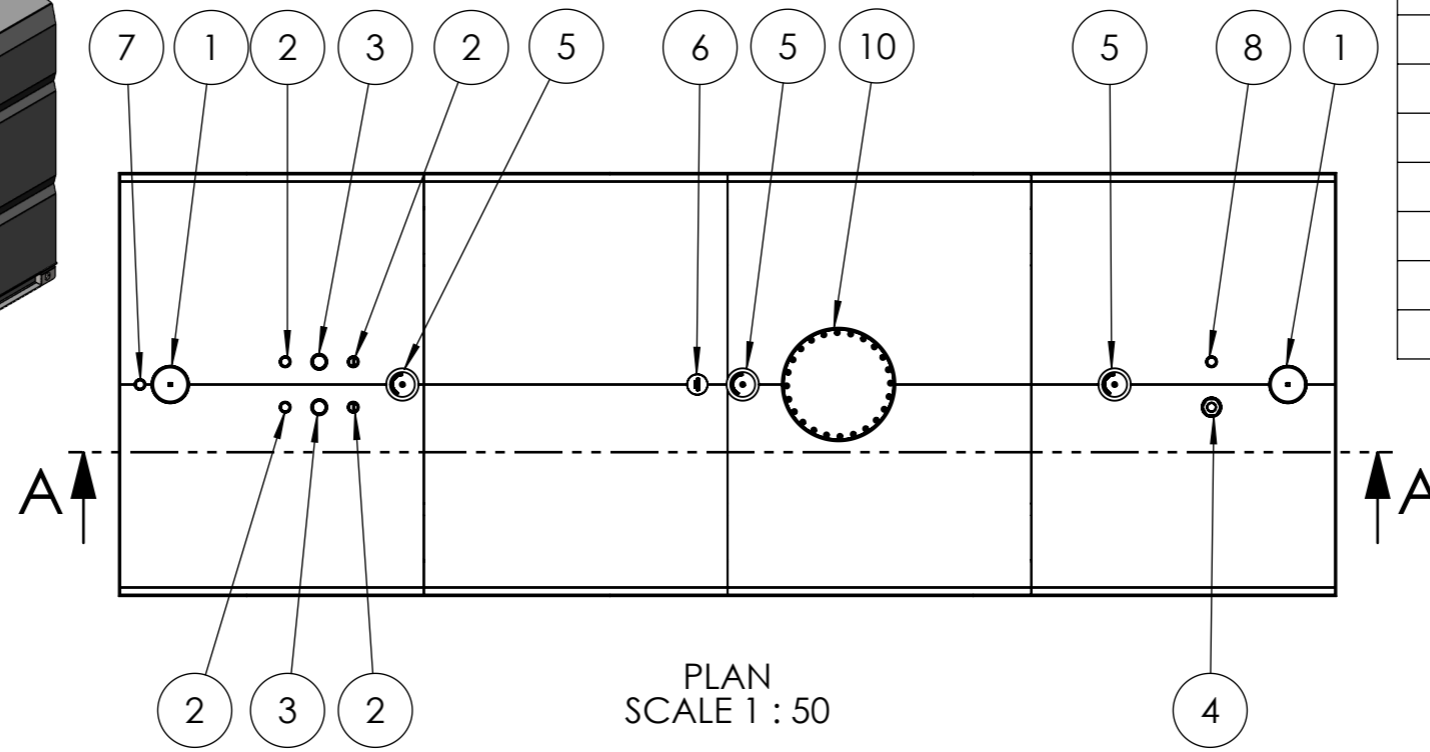
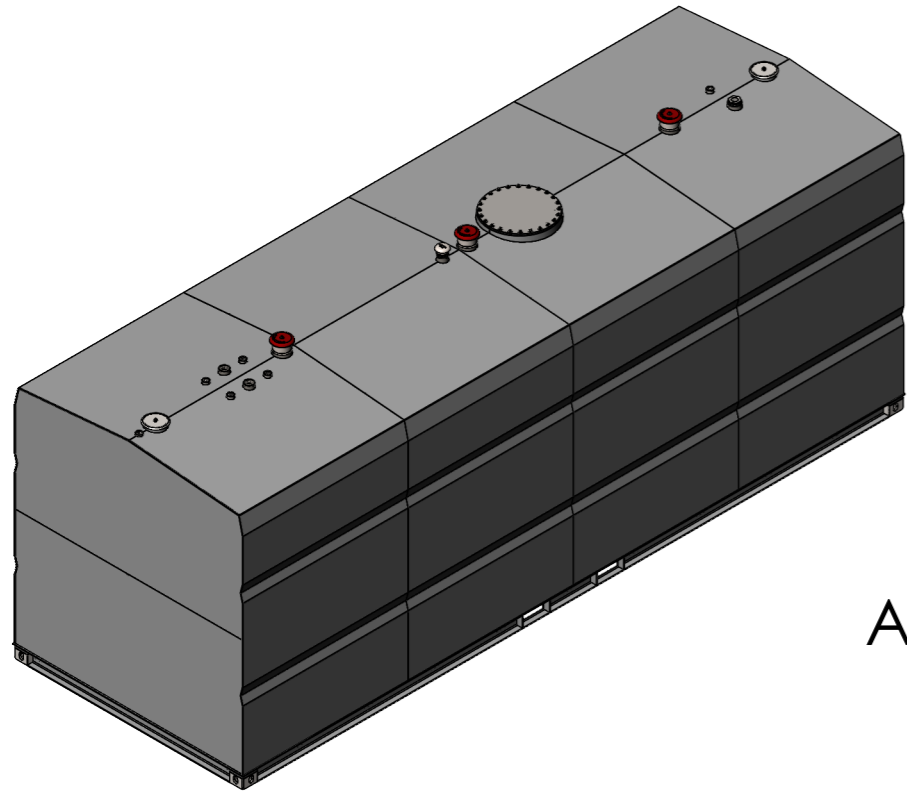
APPROXIMATE DRY WEIGHT: 19,669 kg

NOTE: This weight is only an estimate and can vary by up to 10% due to the make-up of the Vulcan insulation. This needs to be taken into consideration for transport arrangements and when designing for foundations.

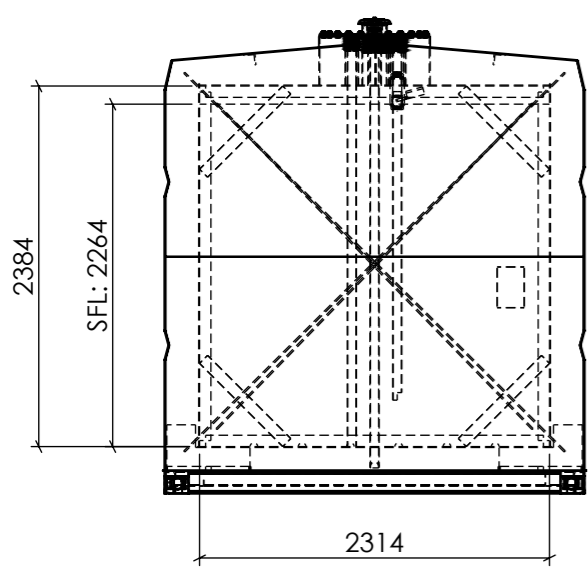


TANK DESIGNED TO SwRI 95-03, SwRI 93-01, AS1940, UL142

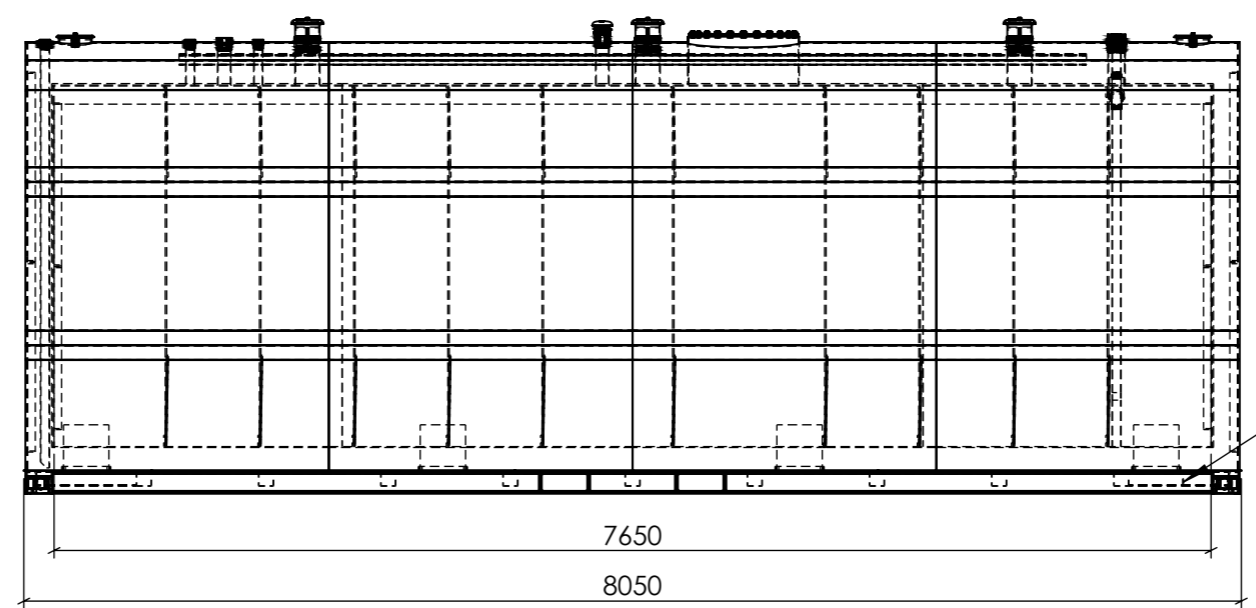
DEBURR AND BREAK SHARP EDGES		TITLE: FUEL STORAGE LIMITED VULCAN MULTI HAZARD TANK RANGE TANK SIZE 30,000L GENERAL ARRANGEMENT	
DATE: 4/11/2024		DWG NO. FSL VMH30000-0C-GA	
DRAWN BY: BAZ		A3	
REVISION: C		SCALE: 1:100	
DO NOT SCALE DRAWING		SHEET 8 OF 12	
WEIGHT:		THIS IS CONFIDENTIAL INFORMATION THIS DRAWING AND DESIGN IS THE SOLE PROPERTY OF FUEL STORAGE LIMITED. IT MUST NOT BE COPIED OR REPRODUCED IN ANY WAY WHATSOEVER AND/OR PASSED ON TO ANY THIRD PARTY WITHOUT WRITTEN AUTHORITY FROM FUEL STORAGE LIMITED.	



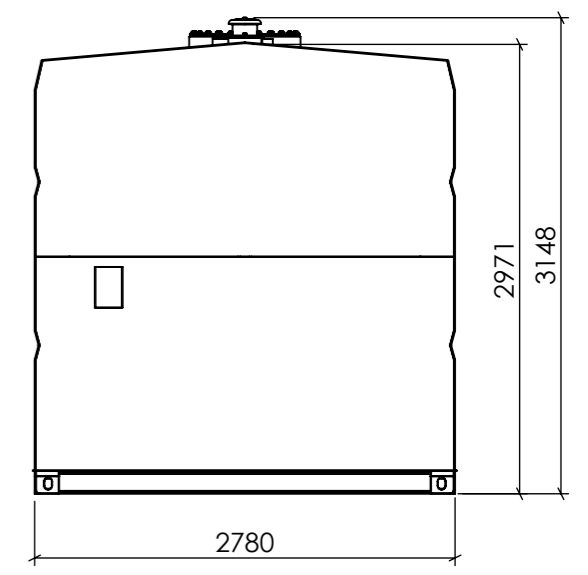
NO.	DESCRIPTION	QTY
1	Interstitial Vent	2
2	NB50 BSP Socket	4
3	NB80 BSP Socket	2
4	NB100 BSP Fill	1
5	NB150 BSP E Vent	2
6	NB50 BSP Free To Air	1
7	NB50 BSP Interstitial Monitor	1
8	NB50 BSP Dip	1
9	Earth Lug	1
10	Man Lid 24"	1



FRONT ELEVATION
SCALE 1 : 50



SIDE ELEVATION
SCALE 1 : 50



BACK ELEVATION
SCALE 1 : 50

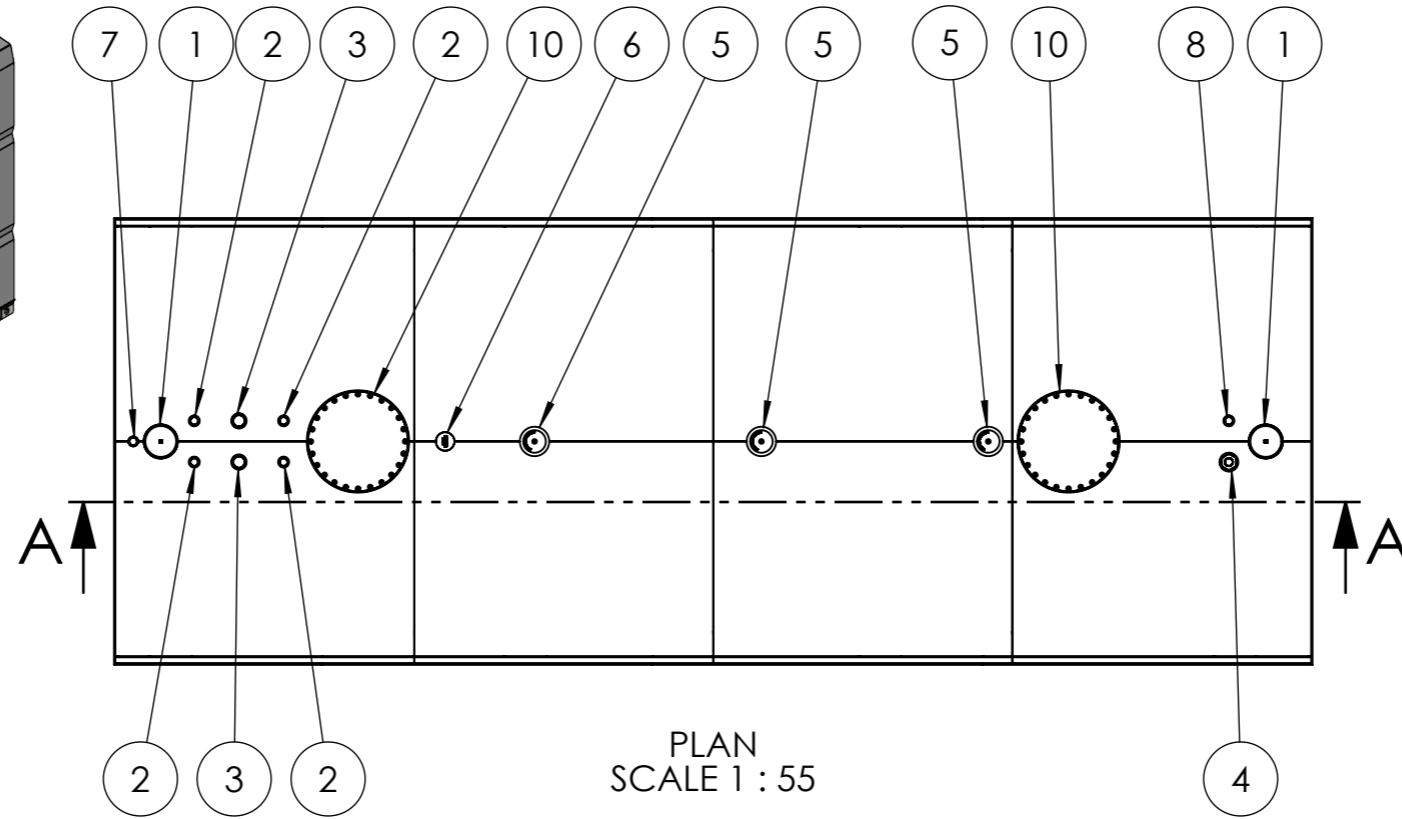
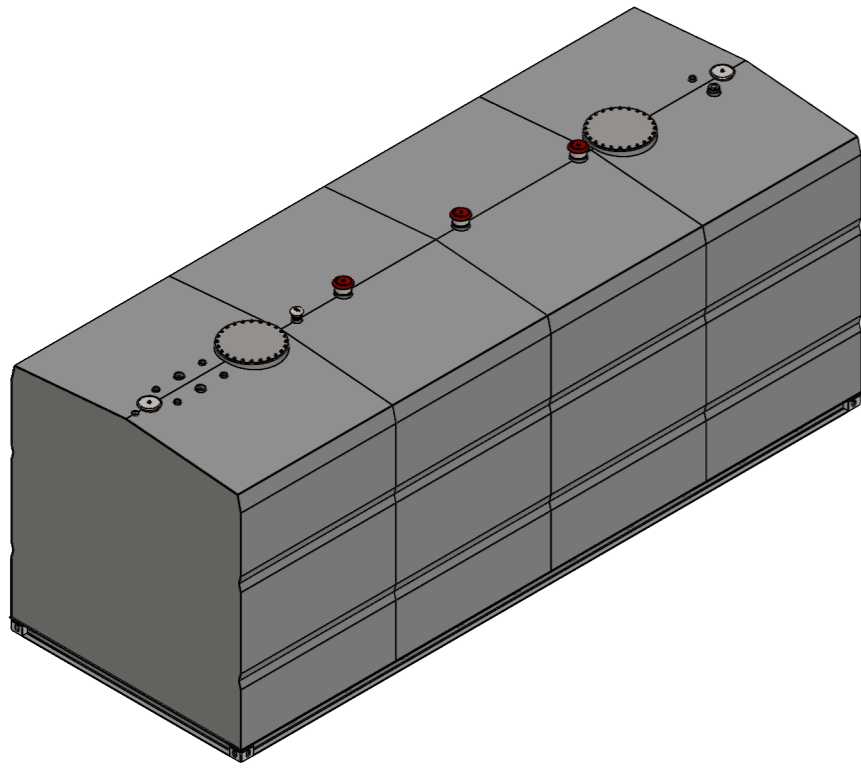
APPROXIMATE DRY WEIGHT: 24,877 kg

NOTE: This weight is only an estimate and can vary by up to 10% due to the make-up of the Vulcan insulation. This needs to be taken into consideration for transport arrangements and when designing for foundations.

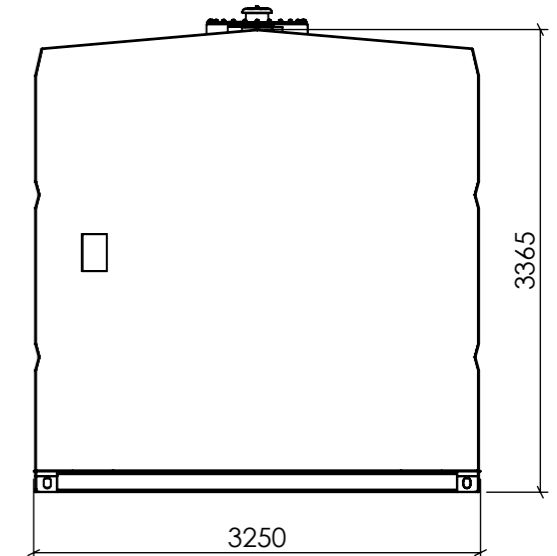
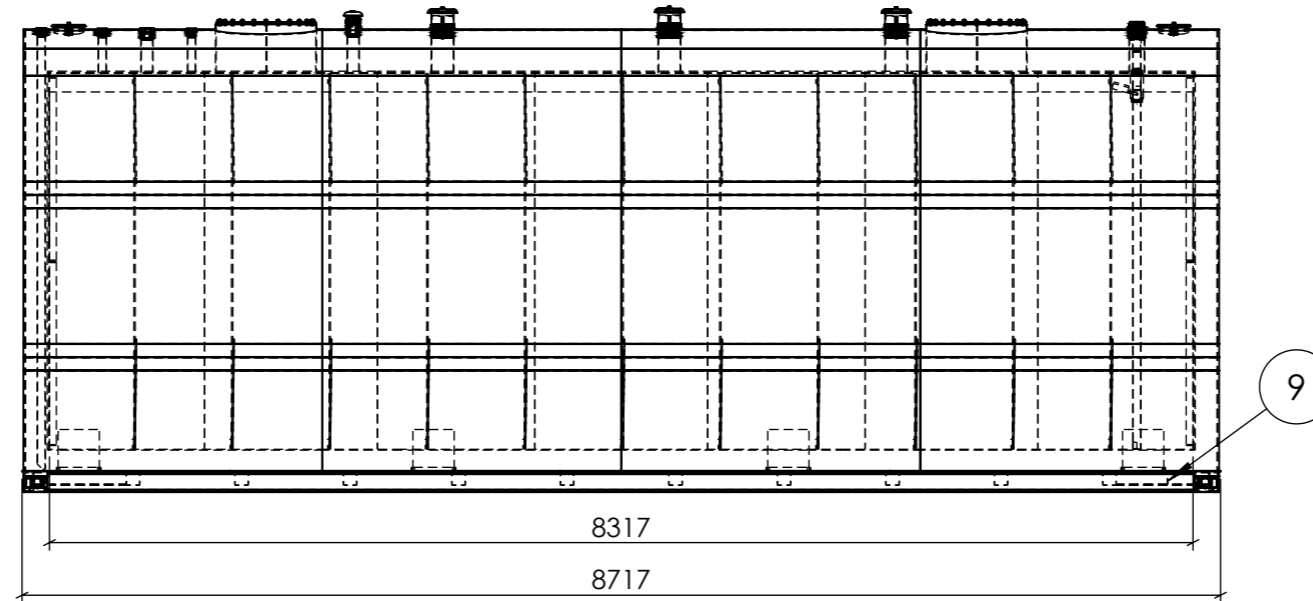
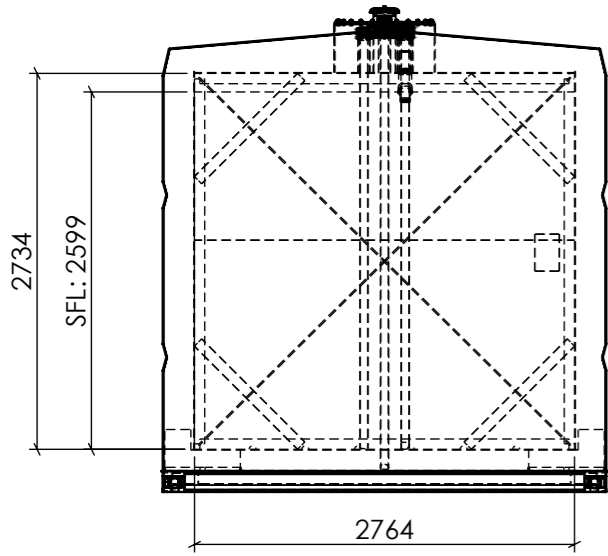


TANK DESIGNED TO SwRI 95-03, SwRI 93-01, AS1940, UL142

DEBURR AND BREAK SHARP EDGES		TITLE:	
DATE: 4/11/2024		FUEL STORAGE LIMITED	
DRAWN BY: BAZ		VULCAN MULTI HAZARD TANK RANGE	
REVISION: C		TANK SIZE 40,000L	
DO NOT SCALE DRAWING		GENERAL ARRANGEMENT	
		DWG NO.	A3
		FSL VMH40000-0C-GA	
WEIGHT:	SCALE: 1:100	SHEET 9 OF 12	
<small>THIS IS CONFIDENTIAL INFORMATION THIS DRAWING AND DESIGN IS THE SOLE PROPERTY OF FUEL STORAGE LIMITED. IT MUST NOT BE COPIED OR REPRODUCED IN ANY WAY WHATSOEVER AND/OR PASSED ON TO ANY THIRD PARTY WITHOUT WRITTEN AUTHORITY FROM FUEL STORAGE LIMITED.</small>			



NO.	DESCRIPTION	QTY
1	Interstitial Vent	2
2	NB50 BSP Socket	4
3	NB80 BSP Socket	2
4	NB100 BSP Fill	1
5	NB150 BSP E Vent	2
6	NB50 BSP Free To Air	1
7	NB50 BSP Interstitial Monitor	1
8	NB50 BSP Dip	1
9	Earth Lug	1
10	Man Lid 24"	1



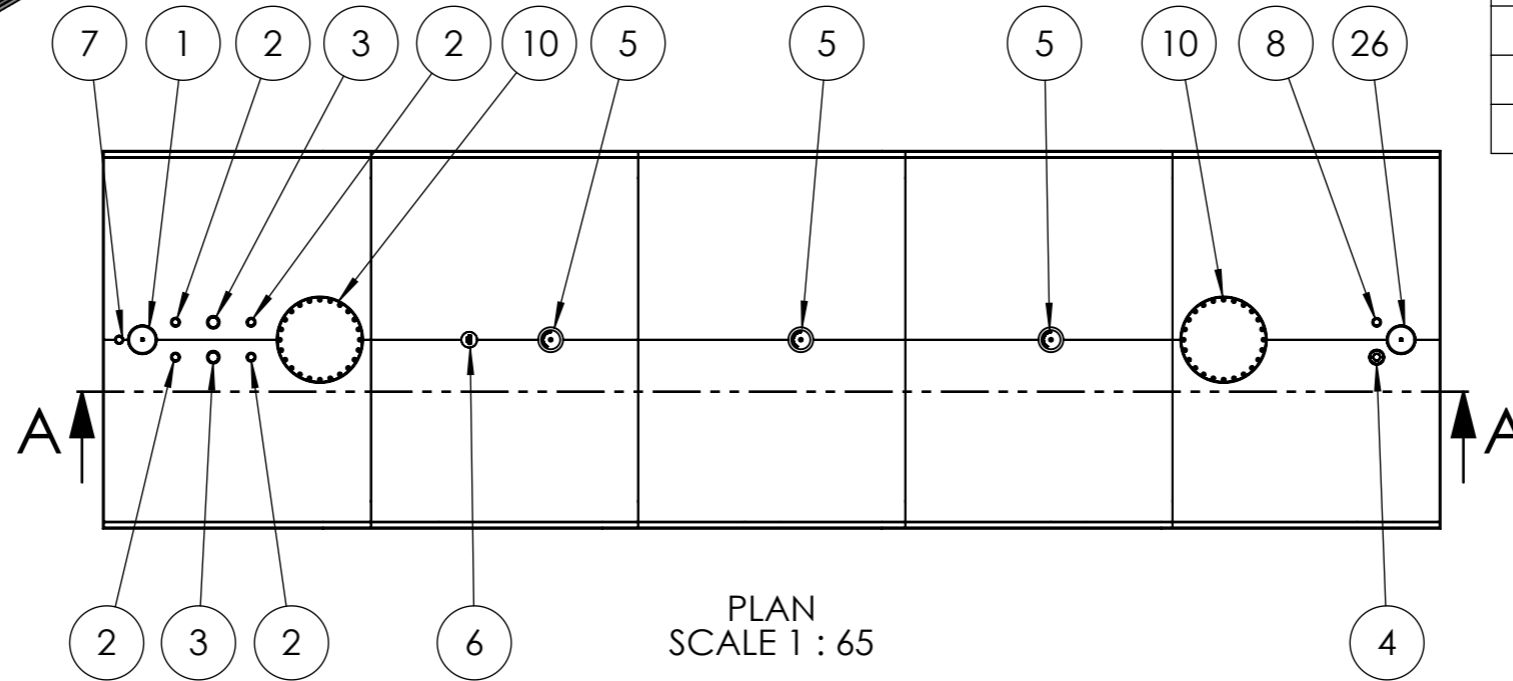
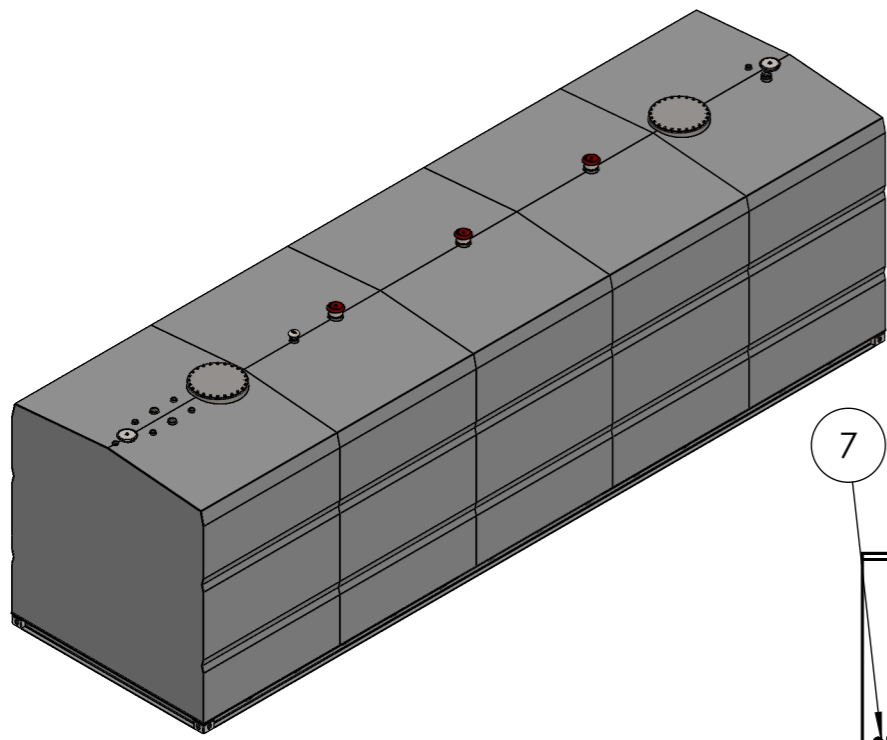
APPROXIMATE DRY WEIGHT: 34,124 kg

NOTE: This weight is only an estimate and can vary by up to 10% due to the make-up of the Vulcan insulation. This needs to be taken into consideration for transport arrangements and when designing for foundations.

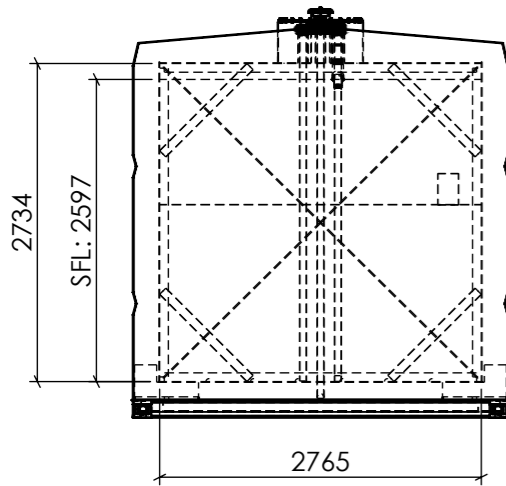
DEBURR AND BREAK SHARP EDGES		TITLE:	
DATE: 4/11/2024		FUEL STORAGE LIMITED	
DRAWN BY: BAZ		VULCAN MULTI HAZARD TANK RANGE	
REVISION: C		TANK SIZE 60,000L	
DO NOT SCALE DRAWING		GENERAL ARRANGEMENT	
		DWG NO.	A3
		FSL VMH60000-0C-GA	
WEIGHT:	SCALE:	SHEET 10 OF 12	
<small>THIS IS CONFIDENTIAL INFORMATION THIS DRAWING AND DESIGN IS THE SOLE PROPERTY OF FUEL STORAGE LIMITED. IT MUST NOT BE COPIED OR REPRODUCED IN ANY WAY WHATSOEVER AND/OR PASSED ON TO ANY THIRD PARTY WITHOUT WRITTEN AUTHORITY FROM FUEL STORAGE LIMITED.</small>			



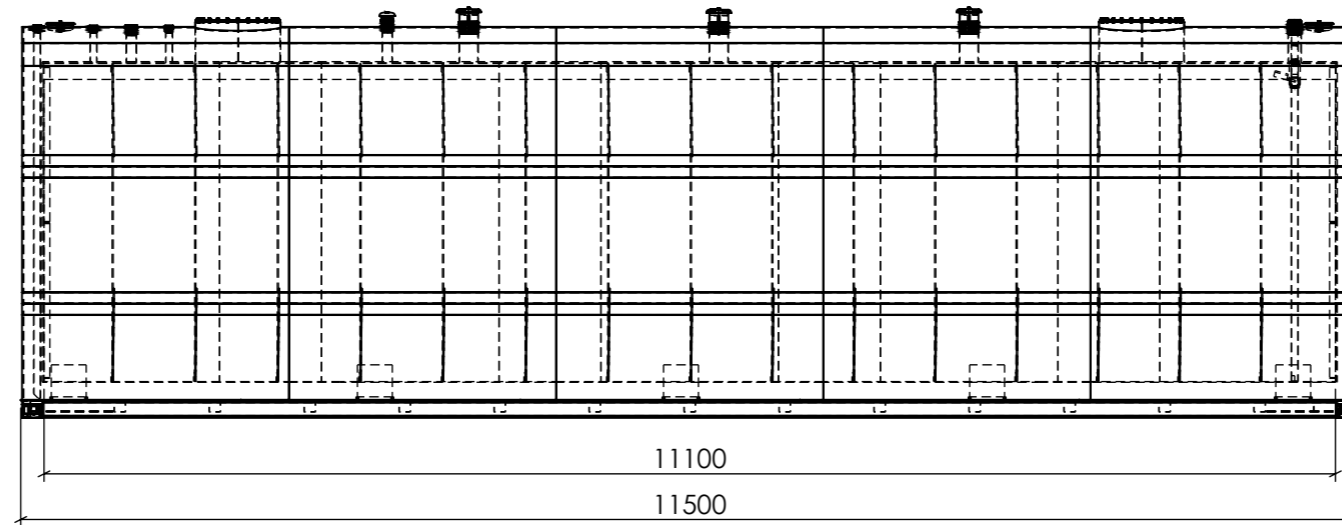
TANK DESIGNED TO SwRI 95-03, SwRI 93-01, AS1940, UL142



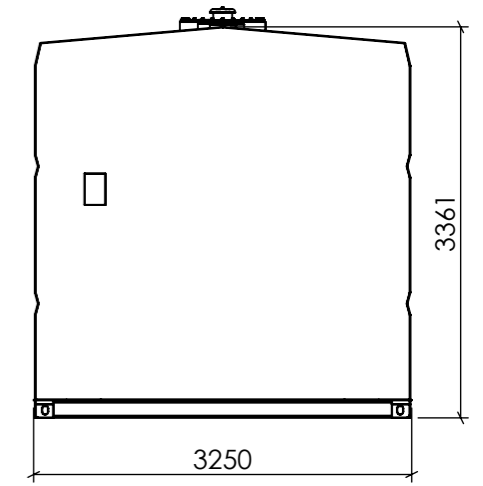
NO.	DESCRIPTION	QTY
1	Interstitial Vent	2
2	NB50 BSP Socket	4
3	NB80 BSP Socket	2
4	NB100 BSP Fill	1
5	NB150 BSP E Vent	2
6	NB50 BSP Free To Air	1
7	NB50 BSP Interstitial Monitor	1
8	NB50 BSP Dip	1
9	Earth Lug	1
10	Man Lid 24"	1



FRONT ELEVATION
SCALE 1 : 65



SIDE ELEVATION
SCALE 1 : 65



BACK ELEVATION
SCALE 1 : 65

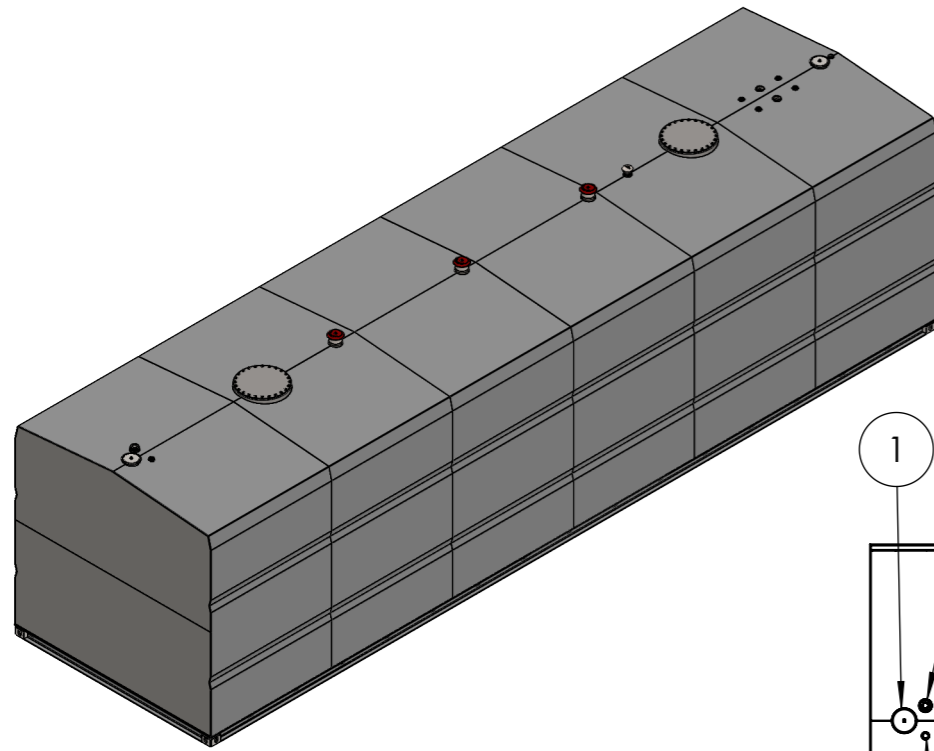
APPROXIMATE DRY WEIGHT: 42,025 kg

NOTE: This weight is only an estimate and can vary by up to 10% due to the make-up of the Vulcan insulation. This needs to be taken into consideration for transport arrangements and when designing for foundations.

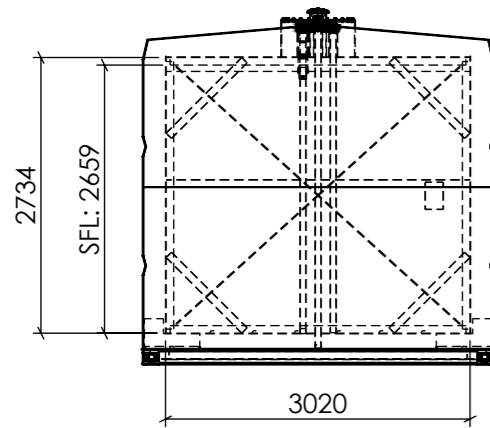
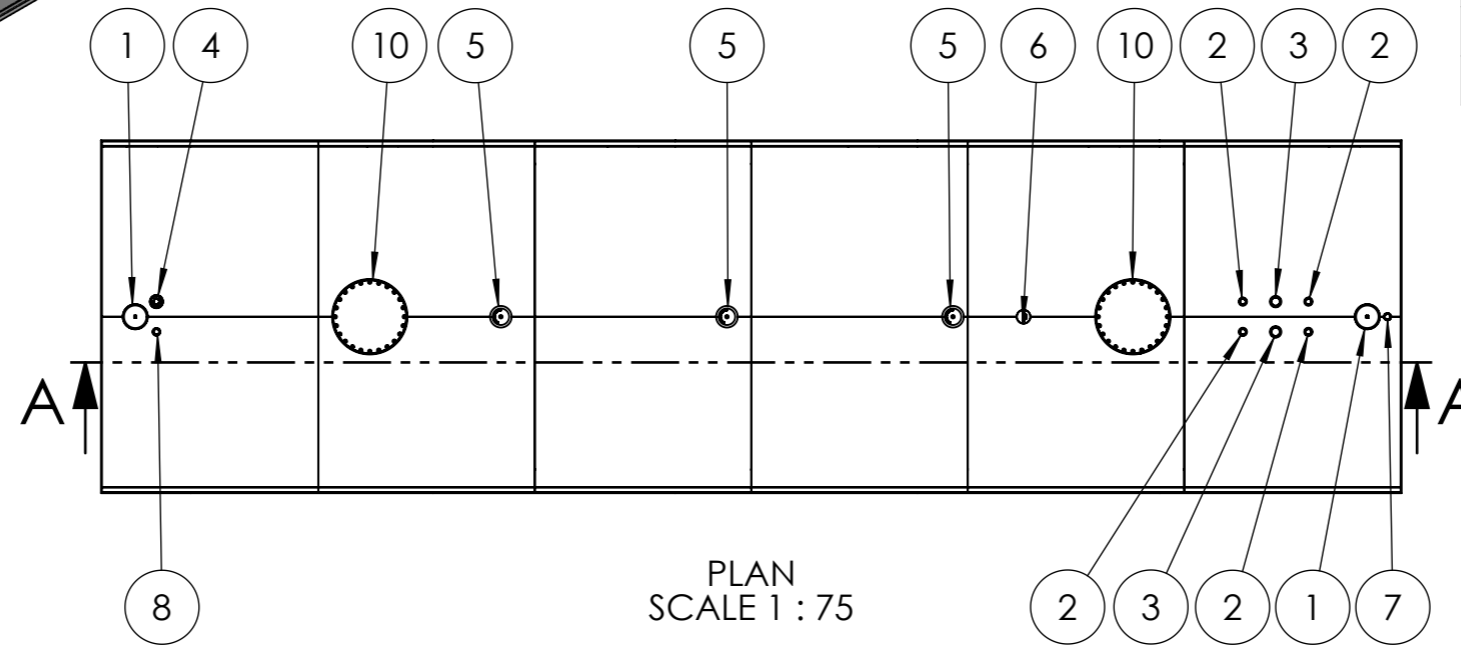


TANK DESIGNED TO SwRI 95-03, SwRI 93-01, AS1940, UL142

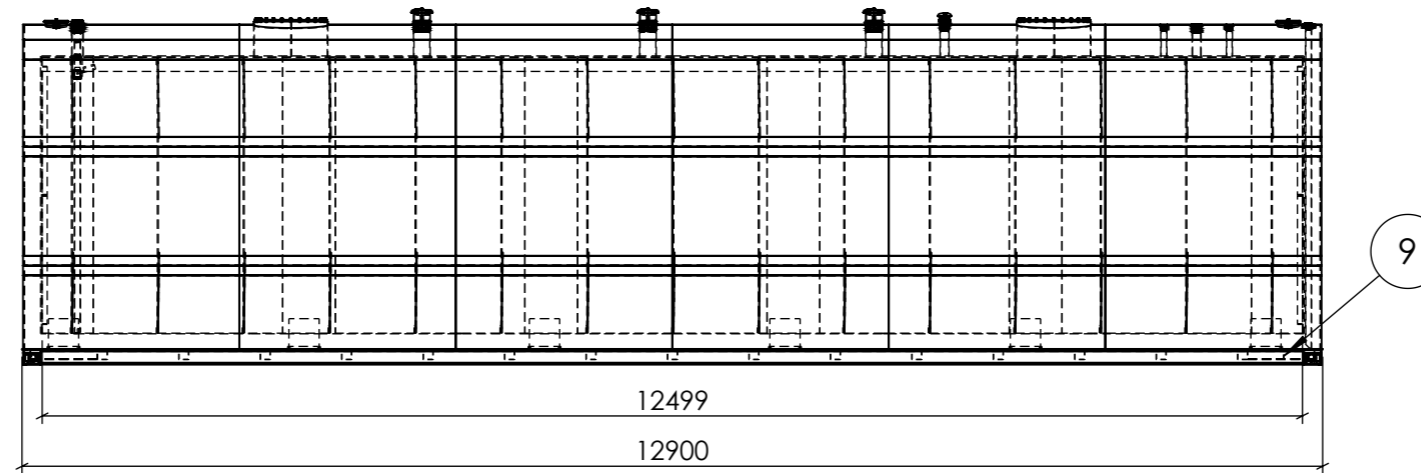
DEBURR AND BREAK SHARP EDGES		TITLE:	
DATE: 4/11/2024		FUEL STORAGE LIMITED	
DRAWN BY: BAZ		VULCAN MULTI HAZARD TANK RANGE	
REVISION: C		TANK SIZE 80,000L	
DO NOT SCALE DRAWING		GENERAL ARRANGEMENT	
		DWG NO.	A3
		FSL VMH80000-0C-GA	
WEIGHT:	SCALE:	SHEET 11 OF 12	
<small>THIS IS CONFIDENTIAL INFORMATION THIS DRAWING AND DESIGN IS THE SOLE PROPERTY OF FUEL STORAGE LIMITED. IT MUST NOT BE COPIED OR REPRODUCED IN ANY WAY WHATSOEVER AND/OR PASSED ON TO ANY THIRD PARTY WITHOUT WRITTEN AUTHORITY FROM FUEL STORAGE LIMITED.</small>			



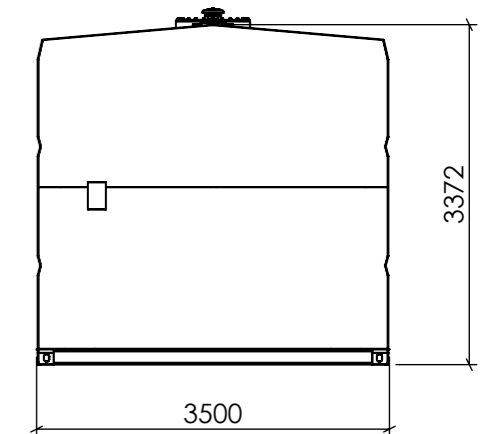
NO.	DESCRIPTION	QTY
1	Interstitial Vent	2
2	NB50 BSP Socket	4
3	NB80 BSP Socket	2
4	NB100 BSP Fill	1
5	NB150 BSP E Vent	2
6	NB50 BSP Free To Air	1
7	NB50 BSP Interstitial Monitor	1
8	NB50 BSP Dip	1
9	Earth Lug	1
10	Man Lid 24"	1



FRONT ELEVATION
SCALE 1 : 75



SIDE ELEVATION
SCALE 1 : 75



BACK ELEVATION
SCALE 1 : 75

APPROXIMATE DRY WEIGHT: 43,485 kg

NOTE: This weight is only an estimate and can vary by up to 10% due to the make-up of the Vulcan insulation. This needs to be taken into consideration for transport arrangements and when designing for foundations.

DEBURR AND BREAK SHARP EDGES		TITLE:	
DATE: 4/11/2024		FUEL STORAGE LIMITED	
DRAWN BY: BAZ		VULCAN MULTI HAZARD TANK RANGE	
REVISION: C		TANK SIZE 100,000L	
DO NOT SCALE DRAWING		GENERAL ARRANGEMENT	
		DWG NO.	A3
		FSL VMH100000-0C-GA	
WEIGHT:	SCALE:	SHEET 12 OF 12	
<small>THIS IS CONFIDENTIAL INFORMATION THIS DRAWING AND DESIGN IS THE SOLE PROPERTY OF FUEL STORAGE LIMITED. IT MUST NOT BE COPIED OR REPRODUCED IN ANY WAY WHATSOEVER AND/OR PASSED ON TO ANY THIRD PARTY WITHOUT WRITTEN AUTHORITY FROM FUEL STORAGE LIMITED.</small>			



TANK DESIGNED TO SwRI 95-03, SwRI 93-01, AS1940, UL142